



# AFC WIMBLEDON v SWINDON TOWN

SATURDAY 19 NOVEMBER 2011 • KICK-OFF 3.00 PM

**npower** LEAGUE 2



MATCH SPONSOR

**ECS**  
Ltd

BALL SPONSOR



PROGRAMME SPONSOR

moorad choudhry

£3.00



# Time for the magic to begin

Visit  
Santa  
in his  
Rainbow Star  
Workshop

## Santa's Grotto opening times

26 Nov – 11 Dec 2011  
12noon – 4pm

12 Dec – 24 Dec 2011  
11am – 5pm

To see Santa  
and receive a gift

£2.50

6 x 4 photo

£3.50

2 x (6 x 4) photos

£6.00

All proceeds go to the  
Centre's nominated charity  
Volunteer Centre, Merton

For full details visit:  
[www.centrecourtshopping.co.uk](http://www.centrecourtshopping.co.uk)



Late night opening • Fabulous gifts • Festive fashion • Over 65 stores



The Cherry Red Records Stadium  
Jack Goodchild Way, 422a Kingston Road  
Kingston upon Thames, Surrey KT1 3PB

Email: [info@afcwmbleton.co.uk](mailto:info@afcwmbleton.co.uk)  
Tel: 020 8547 3528  
Fax: 0808 280 0816  
Twitter: @AFCWimbledon

President: Dickie Guy  
Vice-Presidents: Iain McNay, Mike Richardson  
Chief Executive: Erik Samuelson  
Commercial Director: Ivor Heller  
Youth & Community Director: Nigel Higgs  
Operations Director and Club Secretary: David Charles

First Team Manager: Terry Brown  
Assistant Manager: Stuart Cash  
First Team Coach: Simon Bassey  
Reserve Team Manager: Marcus Gayle  
Head of Youth: Mark Robinson  
Centre of Excellence Manager: Jeremy Sauer  
Club Doctors: Mr Anup Sharma, Dr Bhavesh Kumar,  
Dr Dinesh Sirisena  
Physiotherapist: Mike Rayner MCSP  
Sports Therapist: Rhiannon Luke  
Kit man: Robin Bedford

#### EDITORIAL TEAM

Managing Editor: David Charles  
Editor: John Woodruff  
Contributing Editors: Ray Armfield  
and Stephen Crabtree  
Photographs: Paul Willatts, Rob Beatty and Zoe Linkson  
Proofreading: Sue Chapple  
Advertising: [advertising@afcwmbleton.co.uk](mailto:advertising@afcwmbleton.co.uk)  
Editorial: [editor@afcwmbleton.co.uk](mailto:editor@afcwmbleton.co.uk)  
Design by: Marc Jones/D2E  
Production: The Graphic Design House  
Printed by: Bishops Printers

#### HONOURS

FA Cup winners 1988  
FA Amateur Cup winners 1963  
Football League Division Four champions 1983  
Conference National playoff winners 2011  
Conference South champions 2009  
Isthmian League champions 1931, 1932, 1935, 1936,  
1959, 1962, 1963, 1964  
Isthmian League Division One champions 2005  
Southern League champions 1975, 1976, 1977  
Combined Counties League champions 2004  
Clapham League champions 1897, 1901  
Herald League champions 1897  
London Senior Cup winners 1931, 1934, 1962, 1975, 1977  
Surrey Senior Cup winners 1936, 1940, 1949, 1955, 2005  
Southern League Cup winners 1970, 1975  
Premier Challenge Cup winners 2004  
Supporters Direct Trust Cup winners 2002, 2005  
South of the Thames Cup winners 1954, 1961, 1962, 1963  
London Charity Cup winners 1936, 1950, 1952  
South Western Charity Cup winners 1931  
Surrey Combination Cup winners 1929, 1931  
Surrey Charity Shield winners 1925, 1926, 1927, 1931, 1935  
South London Charity Cup winners 1905, 1931  
Herald Cup winners 1901  
South Western Cup winners 1901

AFC Wimbledon is owned by Wimbledon Football Club  
Supporters' Society Limited (The Dons Trust)

The names of all the Dons Trust Board members are on page 47

All content © AFC Wimbledon Ltd 2011. No part to be reproduced without  
permission. The views expressed by individual contributors do not  
necessarily reflect the views of AFC Wimbledon.

# CONTENTS

## AFC WIMBLEDON V SWINDON TOWN

SATURDAY 19 NOVEMBER 2011  
KICK-OFF 3.00 PM

npower LEAGUE 2



### 14 MATCH ACTION

The Dons exit the JPT but live to fight on in the FA Cup

### 24 MOORE QUESTIONS AND ANSWERS

Sammy Moore talks about football and house-sharing

### 29 MY VOICE LONDON

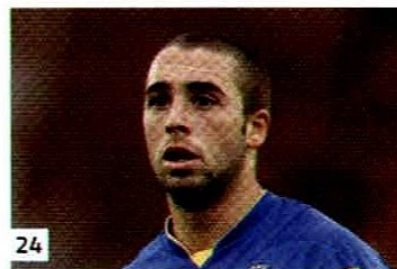
Today's charity of choice – please support them

### 44 THEY WANNA BE ELECTED

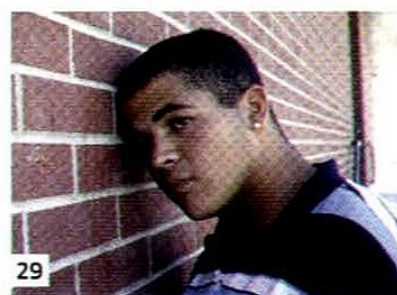
The five DTB candidates say why you should vote for them



14



24



29

## UP FRONT

5 Erik Samuelson | 6 Club news  
10 From the dugout | 13 Haydon the Womble

## IN THE MIDDLE

20 Community Football Scheme | 31 Team of the week | 33 Rewind  
34 Today's teams | 36 Who are you? | 40 We've met before

## AT THE BACK

47 The Dons Trust | 49 Past masters | 51 League 2 stats  
54 Taking care of business | 56 Kit sponsors | 59 On the spot  
60 Follow the Dons | 64 Results and fixtures | 66 The last word





**CHERRY**  
**RED RECORDS**

# The Wonderful World of Cherry Red

New albums from **MARC ALMOND - ANDY BOWN**  
**THE FALL - SUZI QUATRO - JIMINY SOMERVILLE -**  
**VAN DER GRAAF GENERATOR - JAH WOBBLE**

and classic reissues from artists as diverse as

**10CC - ACE - ADAM ANT - A FLOCK OF SEAGULLS - LAUREL AITKEN - BAD**  
**MANNERS - THE BANGLES - BARCLAY JAMES HARVEST - BAY CITY**  
**ROLLERS - ARTHUR BROWN - JOE COCKER - DEAD KENNEDYS - RANDY**  
**EDELMAN - DAVID ESSEX - FELT - HAWKWIND - NICK HEYWARD - HOT**  
**CHOCOLATE - THE ICICLE WORKS - HOLLY JOHNSON - THE METEORS -**  
**BILL NELSON - BILLY OCEAN - THE OSMONDS - MICA PARIS - GRAHAM**  
**PARKER - GENE PITNEY - POINTER SISTERS - POP WILL EAT ITSELF -**  
**SLOWDIVE - SOFT MACHINE - TANGERINE DREAM - THE THREE DEGREES -**  
**TOKYO BLADE - VANGELIS - DIONNE WARWICK - KIM WILDE....**

specialists in Punk, Metal, Soul, Progressive Rock, Psychedelic,  
Ska, Americana, Pop, Hip-Hop, '60s, '70s, '80s, '90s....



**My Favourite Flavour** - The quarterly Cherry Red Magazine  
The place to read about what's new and exciting at Cherry Red:  
reviews, tour dates, gossip, info and lots more!  
To subscribe or join the mailing list e mail [infonet@cherryred.co.uk](mailto:infonet@cherryred.co.uk)



**Football CDs**  
Over 50 club and  
country compilations!  
From Arsenal to Wolves  
and beyond!

[www.cherryred.tv](http://www.cherryred.tv)  
Great concert footage  
& in depth interviews



[www.cherryred.co.uk](http://www.cherryred.co.uk)

FOR MORE DETAILS ON THESE AND OTHER RELEASES AND HOW TO ORDER, CALL OUR MAILORDER HOTLINE 020 8996 3120  
OR VISIT THE WEBSITE Cherry Red Records Ltd. Power Road Studios, 114 Power Road, London W4 5PY



# MINDING OUR LANGUAGE

CHIEF EXECUTIVE **ERIK SAMUELSON** LOOKS AT A SUBJECT THAT CROPS UP PERIODICALLY – THE LANGUAGE THAT IS DIRECTED BY FANS AT OPPOSITION PLAYERS, NOT ONLY INSIDE THE STADIUM DURING MATCHES, BUT OUTSIDE AND AT AWAY GAMES

**G**OOD AFTERNOON AND WELCOME to the fans, officials and players of Swindon Town.

From time to time I get letters complaining about the behaviour and especially the language used by some of our fans. This has been the subject of debate at least once at a Special General Meeting, where the views expressed ranged from "We must cut out all obscene language" to "As a fan I see it as my role to put their players off and I will continue to do so" to "Get a life – this happens everywhere". These are my recollections of what I heard at the SGM, and certainly these are sentiments I've heard in other conversations.

This isn't an easy subject. On the one hand, we want to continue to be a family-oriented club and attract the young fans of the future, while on the other hand, all football clubs have a deeply embedded culture of swearing and chanting, designed either to put an opposing player off or to mock opposition fans.

I looked at the FA Rules on the subject. They are pretty clear that we are responsible for ensuring that "...directors, players (a long list follows) and all persons purporting to be supporters or followers...refrain from...racist, violent, threatening, abusive, obscene or provocative behaviour, conduct or language whilst attending or taking part in

a match in which it is involved, at its own ground or elsewhere...".

This is incredibly far-reaching as it implies that we can be held responsible for the misbehaviour of fans at away games, where we have little or no control over the arrangements. In the event of a charge, our defence can be that we had "...used all due diligence to ensure (our) responsibility was discharged".

We go to great lengths to meet these responsibilities – I talked

**"THERE'S A REAL IRONY THAT IT IS US WHO SHOULD HAVE BEEN ON THE RECEIVING END OF A COMPLAINT"**

about some of the processes in my page in the programme for the Scunthorpe game – but they can be undermined by a small number of fans. And if you read the FA Rules, you will see that they apply to fans both inside and outside the stadium on a matchday.

By now you can probably guess where this is going. We have never had any problems at this stadium when opposing players leave the ground, but following recent allegations (which I'm not going to go into in detail) we are now obliged to put security on the players' door to ensure that they leave safe from abuse. We have never needed to do this

before. The cost is not the issue, but the potential damage to our reputation is serious and there is also potential for being subjected to a charge with an accompanying fine – or worse – from the regulatory bodies. So just how do people who indulge even in "banter" towards opposing players off the pitch think they are helping the club?

At a recent away game Eileen and I went to stand behind the goal. Less than two minutes into the game I heard one of our fans obscenely abusing the opposition goalkeeper. Apart from wondering what the keeper had done to deserve this, other than putting on his goalie's jumper, I was very aware that we, as a board, are responsible for this fan's behaviour and if we don't discourage it we could be subject to a charge from the FA.

From time to time we suffer appalling behaviour from visiting clubs, so there's a real irony that it is us who should have been on the receiving end of a complaint. As a result of this complaint, we will have to look again at what we can do and need to do about obscene and abusive language. We will be realistic and recognise that in times of frustration or excitement there will be a lot of "language" – but we do need to protect the club from excess.

Enjoy the game.





# CLUB NEWS

## HALF-SEASON TICKETS

AFC Wimbledon half-season tickets are now on sale.

If you want to be sure of seeing the Dons' home games for the rest of the season, and are not already a season-ticket holder, then the best way is to buy a half-season ticket. That way, you can see all 12 of AFC Wimbledon's post-Christmas home npower League 2 matches, starting with the game against Oxford United on Boxing Day.

Half-season tickets are available for the John Smith's Stand and Kingston Road End and cost £135 for adults. Other prices are: Concessions £80; Young Adults £40; Under-16s £15.

These half-season tickets will guarantee your entry to the matches that will determine the promotion and playoff places for npower League 2 in 2011/12.

Fans who apply and pay by Thursday 8 December may also attend the Accrington Stanley game at no additional charge – please enquire at the office for details (020 8547 3528).

You can collect an application form from the complimentary tickets window before or after today's game. Alternatively you can download a copy from the official website or call at the club's office to collect one, between 9.30 am and 5.00 pm on weekdays.

If you would like to pay for your half-season ticket in monthly instalments by direct debit, please ask the office for details.

## NARROW DEFEAT IN FA YOUTH CUP

The Dons' youth team were put out of the FA Youth Cup last Tuesday night at The Cherry Red Records Stadium by a strong Bristol Rovers side.

The Pirates went ahead in the opening minutes and doubled their lead close to half-time. Wimbledon struck back almost immediately with a goal from Andre Morgan, but despite piling on the pressure in the second half they failed to change the scoreline.



Andre Morgan scores for the Dons against Bristol Rovers

## MIKE RAYNER'S INJURY NOTES

At the time of writing, Gareth Gwillim had returned to training and we were aiming for him to have played 45 minutes against Tooting & Mitcham in the Surrey Senior Cup last Tuesday. If there was no reaction, he would have trained Thursday and Friday and will start to become available for full selection.

**Sammy Moore** received a heavy impact blow to his foot and ankle against Scunthorpe last Saturday. The area became very swollen, although the swelling has since been settling day by day. We will be monitoring his progress closely to assess whether he will be fit for today's game.

**Kieran Djilali's** hamstring pain has been shown to be more nerve tightness with no evidence of a muscle strain. At the time of writing he was responding very well to treatment, and I am hopeful he will be back running again next week. Once he is able to run I will be sending him for video analysis of his gait.

**Mat Mitchel-King** has been increasing his running progressions without reaction. We hope that he will be able to return to training next week.



## FA CUP DRAW

In the draw for the Second Round of the FA Cup with Budweiser, the winners of the replay between the Dons and Scunthorpe next Tuesday were given an away tie at Bradford City, to be played on 3 December.

## BAN FOR JAMIE

Jamie Stewart misses today's game, having received a one-match ban for collecting five bookings.





## DONS' SHORTS...

### GOLDEN GOALS

There were no goals in the game last Saturday against Scunthorpe United, and the £100 first prize was won by Ed Smith, holder of the ticket for a 0-0 final score. There was no second prize, so £25 has been added to the amount raised on the day.

**Barnet:** The £100 first prize – for scorer number 11 on the team sheet, in the 45th minute – has now been claimed by John Butcher.

So far this season, sales of Golden Goal tickets have raised £5,757 for the Dons Trust Stadium Fund. In all, £126,911 has been raised since sales began in August 2002.

### HAPPY BIRTHDAY MATT

Congratulations to season-ticket holder Matthew Couper, who celebrated his 40th birthday yesterday. Matthew is famed for writing the AFC Wimbledon musical *A Fans' Club*. He was also a mascot for Wimbledon against Hull City in 1983.



For Dons fan Micky Fernandes, who played for the reserves in our Ryman League days and made one first-team appearance, last Saturday was the 1,000th AFC Wimbledon game he has watched (counting all the Dons sides). To mark the occasion he was presented with a shirt signed by all the first-team squad.

### KIDS GO FREE FOR STANLEY

For our forthcoming home npower League 2 fixture against Accrington Stanley on Saturday 10 December, all under-16s will be admitted free of charge to the terraces, subject to the availability of places in the various stands. Proof of age may be asked for.

Please publicise this offer and help to make it a bumper attendance at our last scheduled first-team game before Christmas. Kick-off is at the usual time, 3.00 pm.

### DONS PROGRESS IN CUP

Last Wednesday, AFC Wimbledon won their Surrey Senior Cup Second Round tie 2-1 against Tooting & Mitcham United in front of a crowd of 319 at Imperial Fields. Louie Theopanos opened the scoring and Ryan Jackson added a second before Tooting replied. In the Third Round the Dons will play the winner of the tie between Molesey and Corinthian-Casuals (date to be announced).



Alan Keen making a speech in the House of Commons

### ALAN KEEN MP

It is with sadness that we heard of the death of Alan Keen, the Labour MP for Feltham and Heston, at the age of 73 after a long battle with cancer. You may wonder why you are reading about

a Labour MP in your football programme today, especially as this particular MP was, along with his wife Ann, branded "Mr and Mrs Expenses" over their "use" of the expenses system with regard to their second home.


It's because Alan Keen was passionate about football. Before becoming an MP, he worked as a football scout for Middlesbrough for 18 years. Alan was particularly supportive of AFC Wimbledon, especially during the early days, and before the formation of AFC Wimbledon he was highly supportive of the Dons Trust and Supporters Direct.

Alan chaired the All-Party Parliamentary Group on Football, and was a member of the Commons Culture, Media & Sports Committee. He frequently spoke up for grassroots football and fans in Parliament and helped to conduct two inquiries into English football governance.

Our condolences go to his wife Ann.







simple, intuitive and sophisticated  
portfolio management software for  
investment professionals.

because managing money is hard enough.



thinkFolio®

[www.thinkFolio.com](http://www.thinkFolio.com)



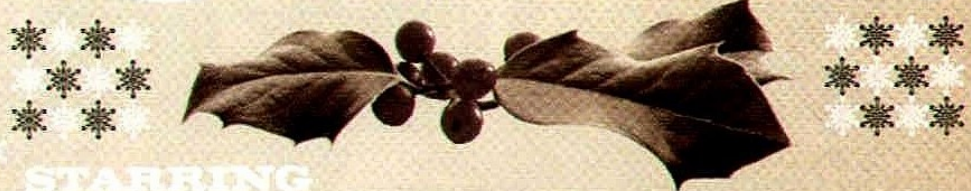
**10th DECEMBER 2011**

**Kingsmeadow**

**L I V E**



# XMAS SKA!



STARRING

**SKALECTRIX  
PLUS DJ JOE**

**KEEPING YOU ON THE  
DANCEFLOOR UNTIL 1AM**



**ADVANCE TICKETS £10 / OTD £12**

**DOORS 7.30PM • BAR TIL LATE**

**[www.afcwimbledon.co.uk/shop/tickets](http://www.afcwimbledon.co.uk/shop/tickets)**

**[www.kingsmeadowlive.com](http://www.kingsmeadowlive.com)**

**THE CHERRY RED RECORDS STADIUM**

**JACK GOODCHILD WAY, 422A KINGSTON ROAD**

**KINGSTON, SURREY, KT1 3PB**



# LOOKING TO GET BETTER ALL THE TIME

THE DONS HAVE TO PLAY THEIR OWN BRAND OF FOOTBALL IF THEY WANT TO SUCCEED IN THE LONGER TERM, SAYS MANAGER TERRY BROWN. OH, AND IT'S NICE TO BE BACK.



FROM THE DUGOUT

**G**OOD AFTERNOON AND A WARM welcome to Paulo Di Canio and his players for today's important league fixture. Swindon come to us in great form, sitting in sixth position in the league and having dispatched a very good Huddersfield Town side 4-1 on Saturday in the FA Cup to earn themselves a Second Round tie at Colchester. Before that they edged past us in the Johnstone's Paint Trophy on penalties after the sides finished the 90 minutes level.

Our current form has been patchy over the past month or so. Four consecutive league wins were followed by three consecutive defeats in which we conceded 12 goals. After the defeat at Torquay we focused on making the back four more solid and determined to keep some clean sheets. This has largely been successful over the past four games, but like most things in life it has come at a price: only two goals conceded in those four games has to be measured against only two goals scored.

The midfield in particular has been a lot more resilient defensively but at the expense of some attacking flair. The message to our players is a simple one: in this league the concentration levels, especially in defence, have to improve. However, do



**"THE MESSAGE TO OUR PLAYERS IS A SIMPLE ONE: IN THIS LEAGUE THE CONCENTRATION LEVELS, ESPECIALLY IN DEFENCE, HAVE TO IMPROVE"**



not lose sight of the fact that when we play our own game with courage and commitment we need fear nobody. Cheltenham Town, Bradford City, Gillingham and Morecambe were dispatched by playing fast, attacking football, scoring 11 goals in the process.

I want the Dons to be playing their football with a smile on their face and playing to our strengths rather than worrying about what our opponents might be doing. We will suffer defeats, some of them heavy, but this new

learning curve on our nine-year journey will stand us in good stead for our future success.

The continuity of our playing staff and the belief the management team has in our young players will allow our

squad to grow at a pace we can afford.

I would like to close on a personal note and thank the supporters and everyone at the club for all their good wishes during a difficult period for my family. My wife Susan is currently recovering from surgery and has told me that it's about time we started to win some games again.

It's nice to be back. Thanks for your support.

**TradeMark**  
**0800 30 50 30**  
www.trademarkwindows.co.uk

*Proud installers at The Fans' Stadium*  
WINDOWS • DOORS • CONSERVATORIES







**THURSDAY 24TH NOVEMBER**

**From 5pm to 8pm**

**PARADE • FIREWORKS DISPLAY • LIVE MUSIC**

- AFC Wimbledon & Friends • Father Christmas
- Borough Brass Band • Balloon Modelling & Magic • Live Music
- Market Stalls on The Piazza • Human Statue • Mince Pies
- Sam Attwater & Anna Williamson from Dick Whittington & Countdown to the Fireworks
- Meet The Celebrities • Hot Food • Children's Rides at the Station

Key Sponsors:



wimbledontcm

**[www.wimbledontowncentre.co.uk](http://www.wimbledontowncentre.co.uk)**







# **PAUL STRANK ROOFING LTD.**

## **ROOFING CONTRACTORS & SUPPLIERS**

Paul Strank Roofing Ltd specialize in every aspect of roofing, whether your requirements are from a complete renewal of your roof to a leaky gutter system. With our vast experience we aim to achieve your goals with minimal fuss and maximum satisfaction.

### **20 year guarantee on all rubberbond flat roofs**

---

**we offer huge discounts across our entire range of roofing materials**

**Velux Roof Windows and Domes**

**Ecotherm Insulation Boards**

**Redland Concrete and Clay Tiles**

**Sandtoft concrete and clay tiles**

**Milled Lead**

**Reclaimed goods**

**FSC Certified Timber**

**Gutter & Rainwater systems**

**Triso Super 10 Insulation**

**Eternit & Natural Slate**

**Bottled Gas**

**Concrete Coping Stones**

**Raising The Roof Lowering The Prices**



**22 Weir Road, Wimbledon, SW19 8UG**

**[www.paulstrankroofing.co.uk](http://www.paulstrankroofing.co.uk)**

**Email: [paul.strank@btconnect.com](mailto:paul.strank@btconnect.com)**

**Office: 020 8944 6010**

**Shop: 020 8944 6063**

**Fax: 020 8944 1262**





## Hi boys and girls!

After the recent cup games we are back to the league today as we take on Swindon Town. We played them at their ground recently and lost on penalties, so let's hope we can improve on that today! Please keep sending in your photographs and drawings – I need lots to cover my burrow walls and to put on this page. Today I've put together a quiz for you. Please email or post your answers to me – the first correct answer pulled out of my hat on 10 December will win a prize. Good luck! Come on you Dons!

## Haydon the Womble

### Junior Dons' birthdays

Congratulations to all the Junior Dons who have celebrated their birthdays recently.

Callum Castling	13
Ben Clark	13
Christopher Vlietinck	15
Issa Souleman	15
David Skone	16
Charlie Smith	10
Cala Thornton	14
Ella Simpson	5
Ben Fitzgerald	10
Billy Frost	15
George Oakley	16
Syrus Stewart	14
Anton Ostermeier	4
Tanaka Gabaza	13

My burrow walls are still looking a bit bare, so please send your photos, paintings and drawings to Haydon@afcwimbledon.co.uk or The Burrow, c/o AFC Wimbledon, Jack Goodchild Way, 422a Kingston Road, Kingston upon Thames, Surrey, KT1 3PB.

### JOIN THE Junior Dons!

If you would like to become a Junior Don (for under-16s it costs £10), please email membership@thedonstrust.org. By being a member you'll get a birthday card and a Christmas card signed by the players, and I will mention your birthday on this page.

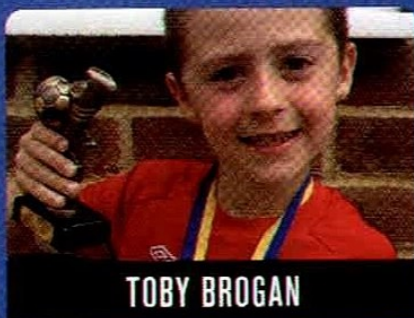
Can you spot five of Terry Brown's players for this season?



Can you find the five players' names hidden in the word search square? Some might go backwards, upwards or diagonally, so look carefully. If you spot the names, email them to me along with your name, age, address and a contact

telephone number, at Haydon@afcwimbledon.co.uk or you can copy and post the page to me at the address below. I need to receive them by Saturday 10 December. The first correct entry pulled out of my hat will win a prize!

### TODAY'S MASCOT



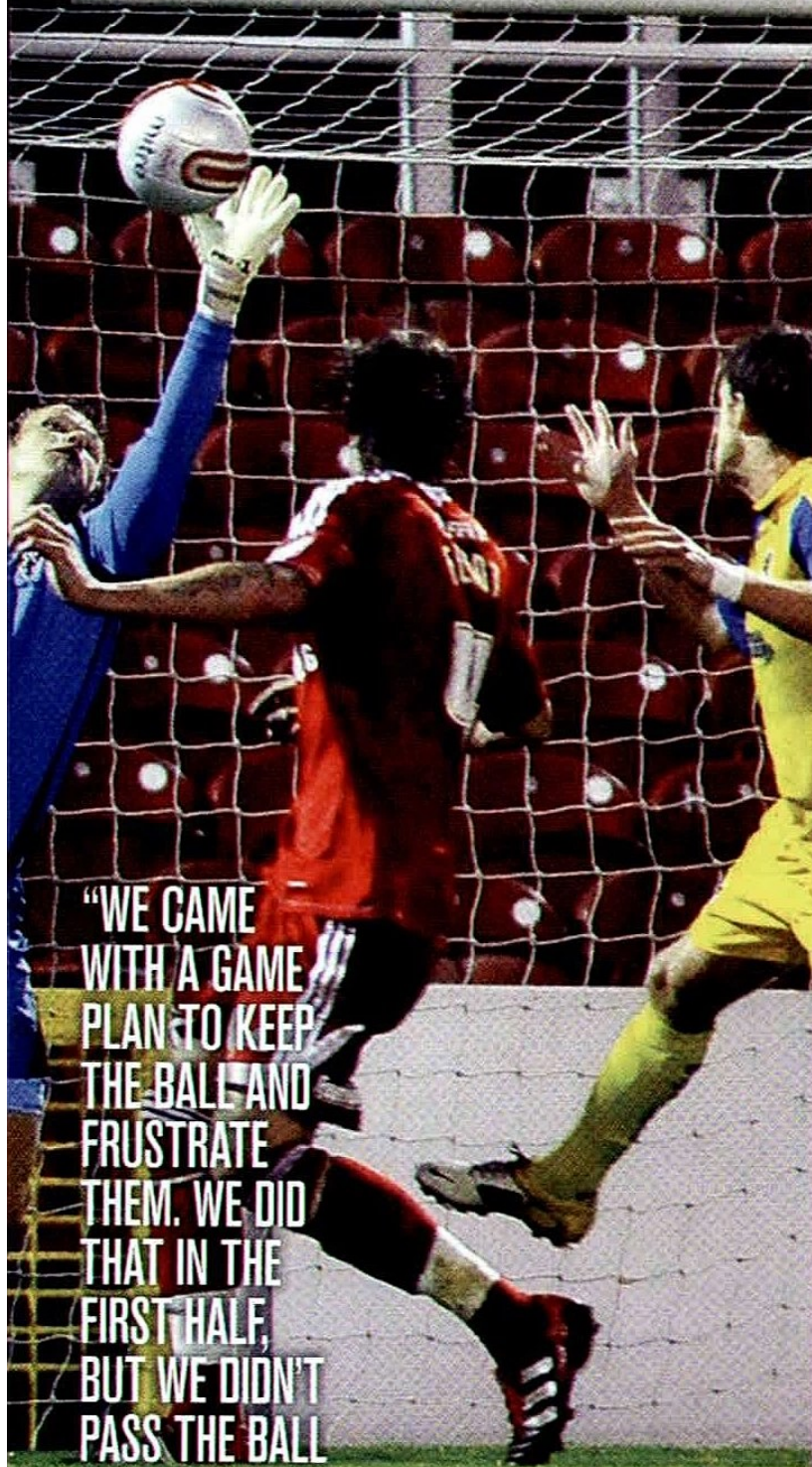
Seven-year-old Toby is from Rudgwick, West Sussex and has a season ticket for the Tempest End. He watches the Dons with his

dad Kevin, godfather Jon, grandad and younger brother Edward. Toby's first Wimbledon game was the 3-2 win at Horsham in 2004, when he was just six weeks old.

His hobbies include attending Beaver Scouts, karate and golf. He plays in defence for Rudgwick Juniors FC Under-8s in the Horsham & District league. Toby's favourite footballers are Brett Johnson and Lionel Messi. He is joined today by his parents, brother and sister, grandparents, uncles and aunties, cousins and friends!







"WE CAME WITH A GAME PLAN TO KEEP THE BALL AND FRUSTRATE THEM. WE DID THAT IN THE FIRST HALF, BUT WE DIDN'T PASS THE BALL SO WELL IN THE SECOND HALF"

stuart cash

Tuesday 8 November 2011  
Johnstone's Paint Trophy • The County Ground  
Attendance: 4,329



SWINDON  
TOWN

Risser 68

1-1

3-1  
ON PENS



AFC  
WIMBLEDON

Yussuff 82



#### Unused subs

Kennedy, McCormack Turner, L. Moore

#### SHOTS ON TARGET



#### SHOTS OFF TARGET



#### OFFSIDE



#### CORNERS



#### FOULS CONCEDED



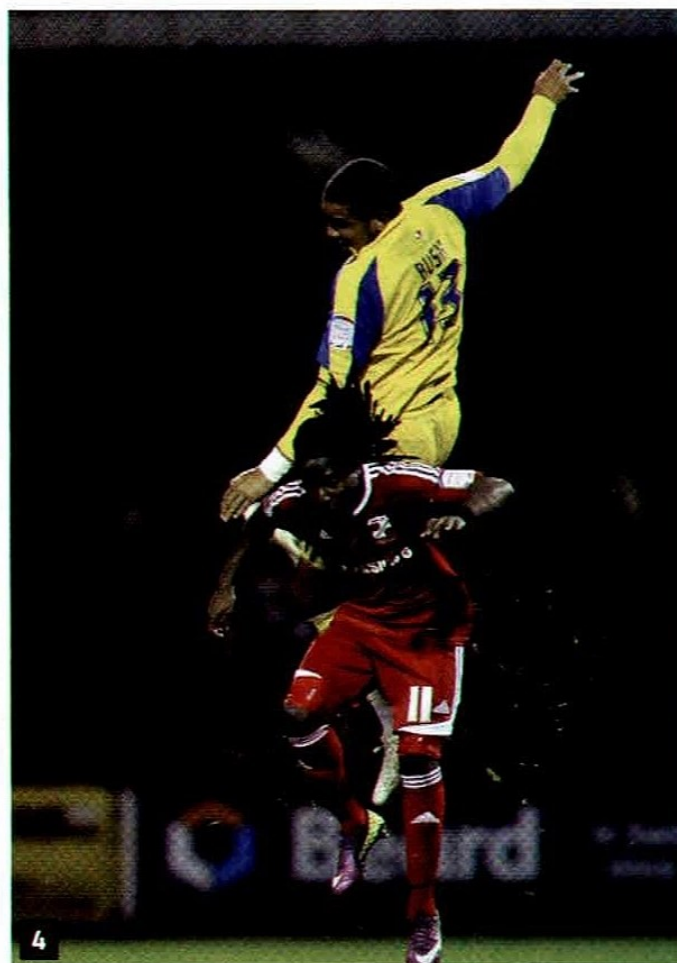
#### YELLOW CARDS



#### RED CARDS







**Left.** Seb Brown palms the ball away to safety

1. Ricky Wellard jumps high to win a header
2. Callum McNaughton's rearguard action
3. James Mulley is struck by Aden Flint
4. Chris Bush reaches new heights





Saturday 12 November 2011  
 The FA Cup with Budweiser  
 The Cherry Red Records Stadium  
 Attendance: 2,933



AFC  
WIMBLEDON

0-0



SCUNTHORPE  
UNITED



#### Unused subs

Turner, Mulvey, Minshull, L. Moore    Byrne, Robertson, Norwood, Wint, Palmer, Johnstone

#### SHOTS ON TARGET



#### SHOTS OFF TARGET



#### OFFSIDE



#### CORNERS



#### FOULS CONCEDED



#### YELLOW CARDS



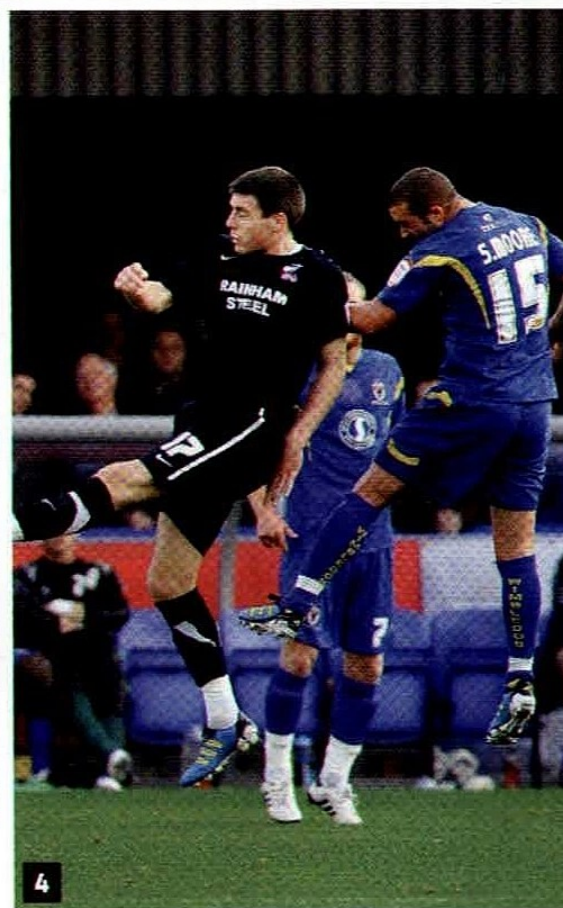
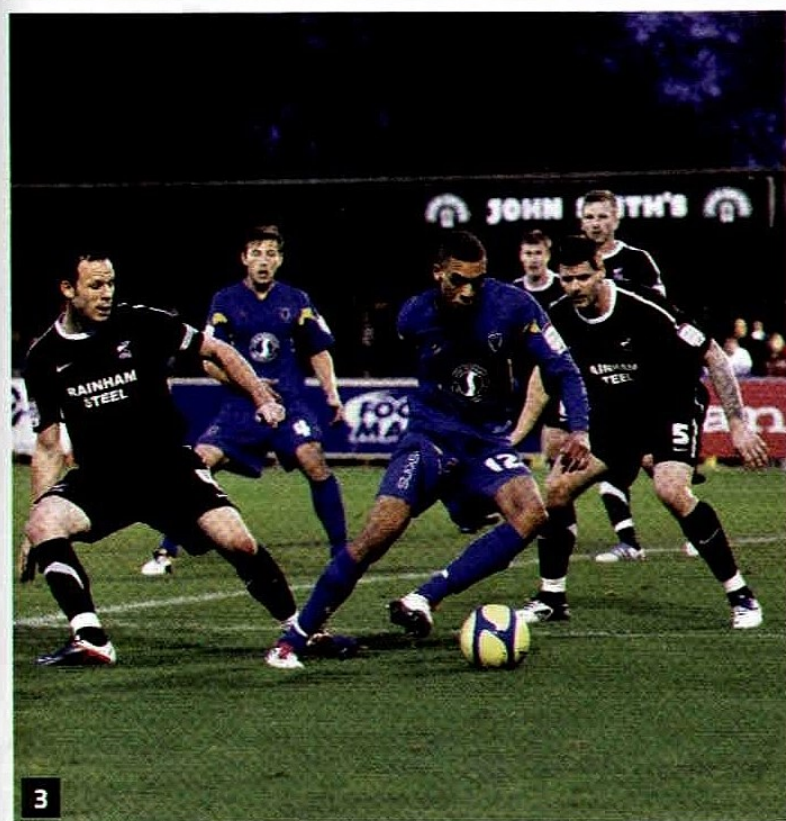
#### RED CARDS



"CREDIT TO  
THE BACK  
FOUR BECAUSE  
WE MANAGED  
TO CONTAIN  
SCUNTHORPE. WE  
GRAFTED TODAY  
BUT I WANT TO  
GET BACK TO  
PLAYING SOME  
FOOTBALL"

terry brown





**Left.** Brett Johnson beats Bobby Grant to the ball

1. Ryan Jackson at full stretch

2. The Dons' defensive wall does its job

3. Christian Jolley keeps the Iron defence guessing

4. Sammy Moore – man of steel





# MONITOR *quest*

The Corporate Intelligence Company

---

Investigations

Corporate & Sporting Integrity

Risk Mitigation

Strategy

---

[www.monitorquest.com](http://www.monitorquest.com)

LONDON - BOSTON

1 DUKE ST. LONDON. W1U 3EA

Tel: 020 7224 4004



# SW19

## THE HOME TEAM

020 8544 2828  
SW19.com

JIMMY SPICES  
WORLD CUISINES

Mexican, Indian, Chinese, Thai & Italian Food

### Opening Times & Prices

#### Lunch Buffet

(Mon-Fri: 12pm-2.30pm, Sat-Sun: 12pm-5pm,  
Table must be vacated by 5pm for Lunch Price)

Open all-day Saturday and Sunday

Monday - Friday: £7.99 per person

Saturday - Sunday: £10.99 per person

Child under 10 years: Half price

#### Evening Buffet

(Mon-Sat: 5pm-11pm, Sun: 5pm-9.30pm)

Sunday - Wednesday: £13.99 per person

Thursday - Saturday: £15.99 per person

Child under 10 years: Half Price

### How does Jimmy Spices Work?

Jimmy Spices welcomes you to its revolutionary concept with live and interactive kitchens, where dishes are custom cooked in front of you. The dishes served embrace the culinary feasts of major world cuisines. With our constantly changing menu items we ensure that you'll never eat the same meal twice!!!

The buffet consist of a great variety of Fresh & Healthy Salads, Crunchy Starters, Freshly Made Main Courses, Indian Breads (You can ask the Chef to make a fresh one for you), Live Chinese Stir Fry: You choose the ingredients and the Chef will cook them for you on the spot, Choice of Pizzas, Pasta (Made to your order); Indian, Chinese & Thai Curries, Desserts, Fresh Fruits & Ice Cream. Please note that the menu keeps changing depending upon the availability of raw ingredients and to offer our patrons variety.

122, The Broadway, Wimbledon SW19 1RH

T: 0208 417 0444 E: [wimbledon@jimmispices.co.uk](mailto:wimbledon@jimmispices.co.uk)

BIRMINGHAM - SOLIHULL - SUTTON COLDFIELD - EPSOM - BATH  
PETERBOROUGH - STRATFORD UPON AVON - STAINES - WIMBLEDON





## WONDERLAND AND WORKSHOPS

YOUTH AND COMMUNITY ADMINISTRATOR **DAN STEVENS** HAS NEWS OF THE CLUB'S PARTICIPATION IN NEXT WEEK'S WINTER WONDERLAND EVENING IN WIMBLEDON AND TWO IMPORTANT NEW COMMUNITY INITIATIVES.

**W**ITH JUST OVER A month to go to Christmas, the festive period is about to begin. For the club, the most notable event at this time is Winter Wonderland, which this year takes place on Thursday 24 November. The local community will gather in Wimbledon town centre to see the switching on of the Christmas lights, the firework display on the roof of the Centre Court shopping centre, and the parade from one end of the

high street to the other. It would be great to see plenty of AFC Wimbledon colours on show among the thousands of people expected to attend, promoting our club in the very heart of our own home town.

The Community Football Scheme will be running our inflatable shooting game which always proves to be popular at public events. We will be joined on the piazza (the pedestrianised area outside Morrisons

and the Odeon cinema) by the youth and first-team squads, and of course Haydon the Womble, before they set off on the parade. There will be plenty of other stalls and activities, so make sure you come down to Winter Wonderland this Thursday for what is always a very enjoyable evening of entertainment! The event gets under way at 5.00 pm and will finish at around 8.00 pm.

At what is a busy time of year for the CFS, we have a

few other events coming up that we would like to bring to your attention. Being promoted to the Football League has given us many more opportunities to be involved with the community. In recent programmes we've mentioned the AFC Wimbledon npower Football League Girls Cup (for Under-13 girls) and npower Football League Kids Cup (Under-11 boys) for schools that are taking place on Monday 28 November and Thursday 1 December, respectively. We are also now working on two further projects: the Respect programme and What's Your Goal?

Many of you will be familiar with some aspects of the Respect programme – you may have seen the advert where Ray Winstone takes the role of a dad watching his son play football, highlighting the type of behaviour by parents that has no place in football. The campaign goes much deeper than that, using football as a

## Respect



Coaches Filipe Goncalves, Stephen Quinn, Adam Wicks and Scott Lockwood with the "players of the day" at Wimbledon Park





model to promote respect in everyday life and in all areas of society. The CFS will be putting on Respect workshops for Year 6 classes in local primary schools, with three main aims: to help children identify unacceptable behaviour and its effect on others, to develop an understanding of respect and how this can be implemented in daily life, and to see situations from other people's perspectives.

What's Your Goal? is a football-based initiative that has been launched to get young people to think about their future careers. In our case, there will be the opportunity for students to apply for up to five job roles at the club over a four-day work experience placement



during the 2012 Easter holidays. This will be after we have visited schools and delivered workshops to students in Years 10 and 11 (ages 14 to 16) about their possible future careers and job applications. The programme aims to build on young people's love of football to get them thinking about their career

opportunities and skills by experiencing what it is like to work in the world of football.

The Respect programme and What's Your Goal? will both commence at the start of 2012. These projects represent a fantastic opportunity for youngsters to benefit from their local football club, and are a great chance for AFC Wimbledon to have a positive impact on young people's lives. As we always say, if you would like a school you are linked with to get involved with either of these initiatives, please do contact us (contact details are below).

Our Saturday Football Club and Future Dons courses are continuing to run every Saturday morning from 10.00 am to 11.30 am, and have proved to be so popular down at Wimbledon Park this term that we often have to change to five groups instead of the usual four. It would be great to see you down there – all the information on our current courses is to be found on the right of this page.

Enjoy today's game, and remember to mark Thursday 24 November in your diary for Winter Wonderland.

## CURRENT COURSES (BLOCK 2)

Sat 5 Nov to Sat 17 Dec  
Second half of the autumn term

### SATURDAY FOOTBALL CLUB

Ages 4–14

Sat 5 Nov to Sat 17 Dec (seven sessions)

Every Saturday during school term time

Wimbledon Park  
Revelstoke Road, London, SW18 5NN

10.00 am to 11.30 am

£6 per session: just turn up on the day

### FUTURE DONS

School years Reception and Year 1

Sat 5 Nov to Sat 17 Dec (seven sessions)

Every Saturday during school term time

King's College London Sports Ground  
Windsor Avenue, New Malden, Surrey, KT3 5HA

10.00 am to 11.30 am

£6 per session: just turn up on the day

## COURSES COMING UP (BLOCK 3)

### SATURDAY FOOTBALL CLUB AND FUTURE DONS

Courses begin on Sat 7 Jan 2012



**CHARTER STANDARD  
COMMUNITY CLUB**

For more information about the courses and the Community Football Scheme, see our page on the official website: [www.afcwimbledon.co.uk](http://www.afcwimbledon.co.uk) and click on the "Community" tab  
Contact us: [communityfootball@afcwimbledon.co.uk](mailto:communityfootball@afcwimbledon.co.uk) call: 020 8974 5712  
Follow us on Twitter: @afcwimbledoncfs



CAPPAGH HOUSE, WATERSIDE WAY, WIMBLEDON, SW17 7AB

TEL: 020 8947 4000 FAX: 020 8944 9447

ENQUIRY@CAPPAGH.CO.UK

WWW.CAPPAGH.CO.UK



**“ Proud  
sponsors  
of AFC  
Wimbledon ”**

UTILITIES CONTRACTORS | HIGHWAY MAINTENANCE  
GROUNDWORK | RECYCLED AGGREGATES | CCTV SURVEYS  
MUCKAWAY | READYMIX CONCRETE | DEMOLITION  
CONCRETE CRUSHING | PLANT & SKIP HIRE

# CAPPAGH



websites  
e-newsletters  
identity design  
p.o.s  
posters/leaflets  
brochures/magazines  
sports programmes  
large format printing  
marketing campaigns  
promotions



**Down 2 Earth design, create and deliver  
a vast array of projects, such as online  
advertising, websites, viral campaigns,  
branding and visual identity.**

**When it comes to making you look good,  
we're decent. As they say in football.**

If you would like to know more  
about us or have a project you'd  
like us to take a look at  
then give us a call on  
**020 8545 4910**





# SAMMY MOORE

## Moore Questions and Answers

**SAMMY MOORE, A SUMMER 2010 CAPTURE FROM DOVER, IS APPROACHING 50 APPEARANCES FOR THE DONS AND HE'S MADE THE MIDFIELD ANCHOR ROLE HIS OWN. HAVING RECOVERED FROM THAT BAD LEG INJURY AT THE END OF LAST SEASON, HE WAS CLATTERED LAST SATURDAY AND HAS BEEN FIGHTING TO GET FIT FOR TODAY.**

**T**HIS PAST WEEK HAS BEEN AN ANXIOUS one for Sammy Moore as he battled to get fit for today's game. "I'm doubtful for Saturday," he told us earlier this week. "I have loads of bruising on my metatarsal and I'm having treatment each morning with Mike Rayner. I passed a late fitness test last Saturday and I'm desperate to be fit to face Swindon – a decision will probably be made on the day of the game."

Having established himself in the midfield anchor role, Sammy does not want to miss out – competition for a starting place is currently very fierce. "I've really enjoyed playing in front of the back four. It's a role I played when I was a kid at Chelsea and it seems to suit me. It helps playing ahead of someone as experienced as Jamie Stuart – he's always talking to me and telling me what to do. I've been

pleased with my performance since I moved there."

As a keen student of the game, he keeps his eye on what is happening elsewhere. He caught the highlights of the international against Spain last Saturday, and not surprisingly he was impressed with the man who plays in the same position for England, Scott Parker. "His work rate was magnificent. He broke the play up and then looked for a simple pass. If we can beat a team as good as Spain, we must have a chance in the Euros."

After Sammy was substitute for the first few games this season, Terry Brown brought the 24-year-old into the starting XI at Plymouth. He was instrumental in a fine win at Home Park and since then has been almost ever present. "We're delighted with how we've adapted to League 2. Everyone was on a high

after our promotion summer, and we were determined to do well. We did start well but we've had some mixed results recently. We need to become more consistent as a team, especially at home."

Sammy came back for pre-season training super-fit, having kicked his heels for three months after a nasty injury against Kidderminster Harriers ended his last campaign prematurely. "It was frustrating to have to sit and watch when I was desperate to be out there with the lads, but I was as delighted as everyone else when we won up in Manchester. When I joined the club, Bass and Cashy told me I'd be a Football League player – and they weren't wrong!"

His career with the Dons is a second coming for the Kent-born midfielder, who made a single first-team appearance for Ipswich







"THIS IS THE  
BEST CLUB I'VE  
BEEN AT. IT'S  
LIKE A FAMILY  
ON AND OFF THE  
FIELD, AND I'VE  
FELT WANTED  
FROM DAY ONE"



# RELAX

Guaranteed discounts for  
**AFC Wimbledon** fans & every  
booking provides **cashback**  
to your club



Cut out and take to your local store below



## Discount Voucher

0844 335 7766

Thomas Cook Retail Ltd, 6 Wimbledon Hill Road  
Wimbledon, London SW19 7NS

Dont just book it. Thomas Cook it.



Elegant Resorts

Airtours

Thomas Cook  
style  
Collection

CRESTA

Thomas Cook  
SIGNATURE

AQUA  
MAYA

NEILSON

flexibletrips

0800



as a youngster. He went on to play a few games for Brentford before dropping down into non-league. "I took two steps back in order to move two forward when I joined Dover. I really enjoyed my time there, but my ambition ever since I was a kid has been to play in the League. This is the best club I've been at. It's like a family on and off the field, and I've felt wanted from day one."

After commuting in every day from Kent last year, Sammy moved into the local area in the summer. "I'm sharing a house with Jolls [Christian Jolley], Fraser Franks and Bushy [Chris Bush]. It's fantastic being just five minutes from training. It means I can get up at 8.30 now rather than 6.30 like I did all last year!

"Jolls is head of the house, and we make sure we have meals together. We keep it nice and tidy. It's working out well between the four of us. I got to know Fraser really well when we were doing rehab together after I dislocated my knee. He's been out on loan with Hayes & Yeading this year and they wanted him to stay on as he'd done so well, but he's come back as he wants to fight for his place here. It's great to see him back.

"Everyone knows how well Jolls has done this year. I wasn't really surprised because he's been so determined to keep improving every aspect of his game. He and Jack Midson have formed a lethal partnership up front, and his pace frightens teams. One of the differences in this league is that clubs scout each other properly, and they've started double-marking Jolls. He's having to learn to adapt and find more space."

Sammy is frustrated that the Dons have drawn so many recent games. "I just think we need a little more quality in the final third. We've done well against every team we've played this year, but

it was disappointing not to beat Barnet two Saturdays ago. In my new position I don't get forward so much, so I was really pleased to score from inside the box. One of my best mates in the game – Graz [Giuliano Grazioli] – is their assistant manager, and he wasn't talking to me after the game!"

After the draw at home to Scunthorpe last week, Sammy is upbeat about the team's chances in the replay. "Everyone knows that the FA Cup is the best competition in the world, and we'd all love to be in the hat in the New Year. We did well last week against a team who've just come down from the Championship. Seb made a few good saves, but we could have nicked it at the end. There's no reason why we can't go up there and win it.

"If we do, then I fancy our chances against Bradford in the next round as we've already beaten them away – our performance up there was one of our best this season." And who would he like in the Third Round? "I'm a West Ham fan, so I'd love to play the Hammers, but it would be fantastic to play against any of the big four. Arsenal or Man United would be a dream come true."

For now, though, Sammy is concentrating on getting AFC Wimbledon enough points to thrive in League 2. "The game against Swindon will be really hard. I spoke to one of my mates, who plays for Huddersfield, and he told me they were passed off the pitch in the FA Cup last Saturday. We will have to play well to win."

After nearly 50 games for the Dons, Sammy Moore has become a key member of the side. "Like every player I want to play as high as I can, and I hope to move up with AFC Wimbledon. In the long term there's no reason why we can't make the Championship. This club is set up to succeed."





THE FRIENDS OF THE DONS TRUST PRESENT

AFC WIMBLEDON

# CHRISTMAS DISCO

# KARAOKE PARTY

**SATURDAY 17TH DECEMBER**

**CHERRY RED RECORDS STADIUM**

Back by popular demand!

Come along to celebrate the festive season with your friends, fellow supporters and fans' favourites Jon Main, Mikey Haswell, Elliott Godfrey, plus maybe one or two surprise guests, as we celebrate our 10th Christmas together since the formation of AFC Wimbledon.

The party starts at 8pm, with carriages at 1am to allow plenty of time for those travelling to Rotherham that day to join in the fun upon their return.

Tickets £10 each (including a cold buffet)  
on sale NOW from the Dons Trust Table.

Buy your ticket on or before Saturday 19th  
November and receive a voucher for a shot for only  
£1 on the night\*

\*over 18's only, subject to sight of valid ID, no cash or drink alternative



# MY VOICE LONDON

BACK IN SEPTEMBER, DONS TRUST MEMBERS VOTED FOR THE CHARITIES THEY WOULD LIKE TO SEE GIVEN THE OPPORTUNITY TO FUNDRAISE AT ONE OF OUR HOME MATCHES. TODAY'S CHARITY IS WIMBLEDON-BASED MY VOICE LONDON. PLEASE READ ABOUT THE WORK THEY DO AND DIP INTO YOUR POCKETS FOR THEM TODAY.

**A**S YOU ARE ALL AWARE, AFC Wimbledon is dedicated to its local community, particularly the younger generation. My Voice London works throughout South London with children from 7 to 19. Working through mentors, they motivate underachieving children to complete their education, enabling them to move forward to further studies or to successfully enter the workplace, and accept a role in society.

Often, the children are vulnerable, with difficult backgrounds, and face extreme challenges, like Deano: "When I was nine I left school and done crime and got in trouble with the police a lot and done things I shouldn't do, and you gave me a mentor. He changed my life. Without you I would be in prison or dead."

The challenges facing the children that My Voice London works with can be wide-ranging, but every one of them has a need to stop and take stock of their lives, identify areas they want to change, and find solutions for themselves. My Voice London and their mentors provide the support and the direction.

In the last year, they have

worked with 1,138 children, providing:

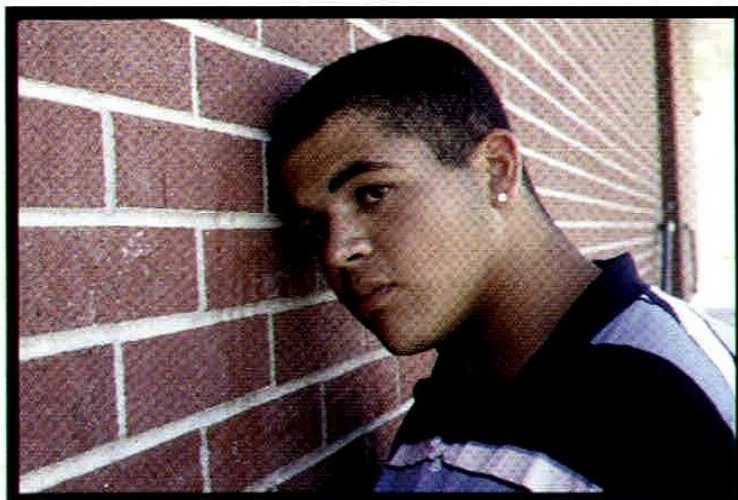
- one-to-one mentoring support
- advocacy for parents/carers in acute circumstances
- support and advice to parents and carers
- employment and related experiences for children, including those with special needs.

During the past year 165 business and community volunteers – including AFC Wimbledon –

helping teachers to implement MicroSociety. This programme introduces children, in a very hands-on way, to their challenges and opportunities in society and the real world. One teacher said, "You are one of the few organisations actually working with children and having an effect. You are in the frontline actually delivering benefit to the children, not just having meetings to discuss them."

Unemployment, inflation and benefit cuts will put families under even more pressure. Cuts in public and voluntary sector funding and projects are likely to mean that there will be fewer places that children and families can go to for support.

Your club knows first hand what a great job this charity does, and we know how much they need your financial support. We encourage you, as usual, to give generously.



Please help to give young people like him another chance

supported the work of My Voice London. This summer they helped us to host a mad keen football fan from a local special needs school, following sessions held at the school with some of our first-team players.

As well as providing mentors, My Voice London works with schools throughout South London,



For more information, go to [www.myvoicelondon.org.uk](http://www.myvoicelondon.org.uk)





# MERTON ABBEY MILLS

SW19

South London's  
Alternative  
Arts & Craft  
Market

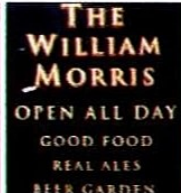
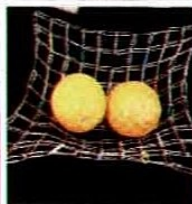
Re-launched market with new stalls, pub, a range of restaurants & shops.

**Fine Art** • Natural Beauty Products  
• Mind, Body & Spirit Gifts • **Baby Products & Toys** • Customised Trainers & Tee Shirts • **cafe & carvery** • Hats & Scarves • **cup cakes** • Knitwear • **Bags** • Herbalist • Ceramic Pendants • Jewellery • **Crystals** • Screen Printed Artwork • Haberdashery • Handmade Bears • Fancy Dress Shop • **Photographers** • **Greetings Cards** • Restaurants To Suit All Tastes • **Dance Studio** • Children's Activities & The Colourhouse Theatre • Cuisine for all Tastes • **Heritage Site** • **Live Music** • Doll's House Furniture • **Picture Framers** • **Beauty Parlour** • **Crepêrie** • The William Morris Pub

Every Sat & Sun 10am-5pm

Free local parking

10mins from Colliers Wood



facebook

020 8543 9608 www.mertonabbeymills.org.uk  
020 7287 1766

Merton Abbey Mills,  
Watermill Way, London SW19 2RD



# WELCOME TO THE UNDER-15S

THE AFC WIMBLEDON UNDER-15 SIDE, SO SUCCESSFUL IN THE PAST AS THEY ROSE THROUGH THE AGE GROUPS TOGETHER, ARE NOW THRIVING AS A CENTRE OF EXCELLENCE TEAM PLAYING SIDES FROM OTHER LEAGUE CLUBS IN SOUTH-EAST ENGLAND. THEIR MANAGER TONY WILSON HAS A PROGRESS REPORT.

**N**EARLY ALL THE BOYS IN THE Under-15 squad live local to the club. They have played together for the past five years – and three of them were in the team that started as the Under-7s back in 2003. Mark Robinson and I have been with them all the way through their progression, and we have recently been joined by Michael Hamilton, who has provided some great coaching ideas to help support their development.

These boys have been the most successful AFC Wimbledon side at youth level, and indeed one of the most successful youth teams in the country. Along the way they have won six league titles and twelve cup finals, and were English Champions in 2010. They won 107 con-

secutive games and remained unbeaten for nearly four years.

This season was always going to be challenging for them as they entered a new era for them and for the club with the arrival of Centre of Excellence foot-

Crawley and a well-regarded Millwall Under-15 side

- three of the boys stepping up to play for the Under-16s and holding their own
- the team's strong attacking style – they have scored in

every game they've played

- a sound defence – they have kept three clean sheets so far this season.

All these boys have fantastic potential, and with the continued support from the coaching infrastructure



The Under-15s on the attack against Wycombe Wanderers

ball. But the boys have coped extremely well, and in their ten games against Football League teams they have won six, drawn two and lost two.

Some of the highlights for the team this year have been:

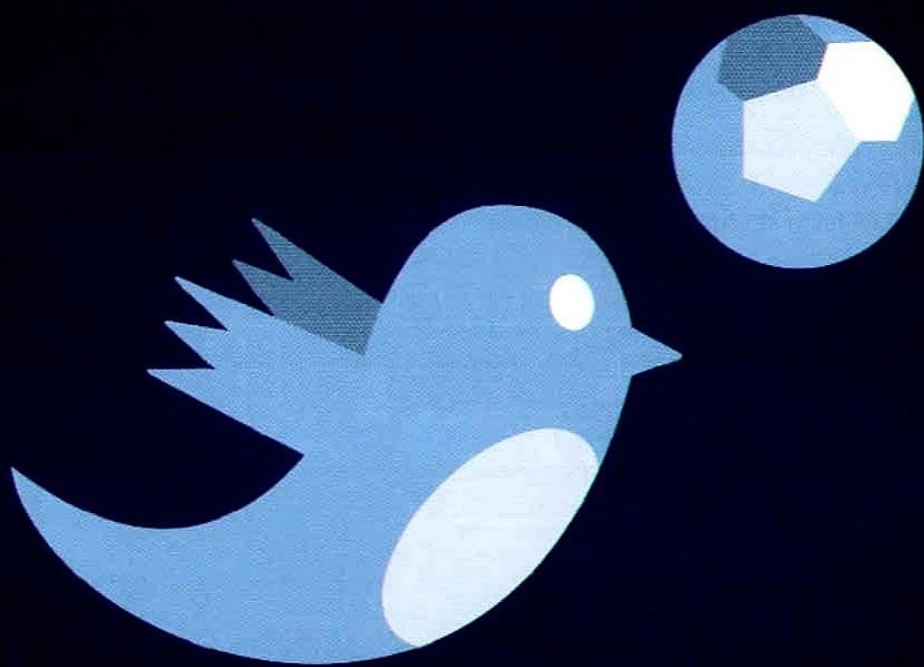
- very strong performances early in the season against

structure that we have at the club for youth players, they may one day be playing for the first team in front of you and your fantastic support.

I'm sure you will join us in giving them a big round of applause as they walk round the pitch in the half-time interval.

The strict rules that govern the operation of Centres of Excellence prevent us from publishing details of results and fixtures and information on individual players as we have done in previous seasons.





## **PLAY YOUR PART** **@FOOTBALL\_LEAGUE**

Have your say and keep up with all the action and official news from Football League HQ, as we tweet the hottest issues of the day. Plus, don't miss out on our regular weekly fun and games with **#TuesdayTrivia** as well as **#WheresJon** & **#WheresJackie**!

To follow us, go to [www.twitter.com/football\\_league](http://www.twitter.com/football_league) or to send us a message, tweet **@football\_league**







**SAMMY MOORE**

On 18 November AFC Wimbledon win an epic FA Cup First Round replay 3-2 at Ebbsfleet United. The Dons look to be heading out of the competition until a 94th-minute equaliser from Sammy Moore takes the tie into extra time – and he repeats the trick in the 120th minute.

Three days later, the Dons regain top spot in the Blue Square Bet Premier with a 3-2 win over Kettering Town. Mindful of an upcoming FA Cup game against Stevenage live on ITV, Terry Brown rests Danny Kedwell and Steven Gregory. Luke Moore is on target with two goals.

It's not such a good afternoon for the AFC Wimbledon Ladies, who crash 7-1 at home to Borehamwood in a London & South Eastern Regional Women's League game on 14 November. It proves to be the Dons' last league action for two months – when they lose 7-0 in the return game.

Two weeks beforehand, Tonbridge Angels had left Kingsmeadow on the end of a 3-2 defeat in the FA Trophy, but now AFC Wimbledon end up on the wrong end of the same scoreline in a Ryman League encounter. A Mark Green own-goal adds to Scott Fitzgerald's first-half headed opener.

It's one in and one out for Dave Anderson's squad. A month after being placed on the transfer list, midfielder Scott Curley leaves AFC Wimbledon for AFC Hornchurch, while experienced free agent Jermaine Darlington – once of Wimbledon FC, of course – agrees formal terms until the end of the season.



**JERMAINE DARLINGTON**

The Reserves win 2-1 at Merstham in a Suburban League Southern Division fixture. Casey Maclaren and Dwaine Williams are on target for Wimbledon, who field a few unfamiliar names, including striker Byron Harrison (now plying his trade at League 1 Stevenage after a successful season with Carshalton Athletic).

Late equalisers have been Wimbledon's speciality this season, but the Dons are on the receiving end at home to Walsall when Jorge Leitao's 88th-minute strike gives the Saddlers a point from a 2-2 draw. A David Connolly double almost gives the Dons their first home midweek win in four years.

Seven days after scoring for Sweden against England, 30-year-old midfielder Hakan Mild – capped 74 times for his country – becomes a surprise addition to the Wimbledon squad. Putting pen to paper in a deal bringing him over from Gothenburg, Mild says: "It is very exciting and I am delighted to be here."



**HAKAN MILD**

Wimbledon supporter Laura Smith opens the scoring for the Dons Ladies in their 6-1 win over lowly Berkhamsted in an FA Women's Premier League Southern Division encounter. She adds two more for a memorable hat-trick before Sandra Hughes, Julie Kirk and Charlie Simm also weigh in with goals.

On 20 November holders Millwall are dumped out of the FA Youth Cup by a determined Wimbledon side on a bitterly cold evening at Plough Lane. The Lions eliminated the Dons at the quarter-final stage the previous season, but the Dons go through this time with goals by Paul Jennings and Leighton Allen.

Three days later, Wimbledon – missing talismanic captain John Fashanu – and Liverpool – eight months into Graeme Souness's destructive reign – both look toothless shadows of their former selves. It comes as no surprise that they grind out a goalless draw at Selhurst Park and remain stuck in mid table.

Wimbledon fail to persuade Fulham coach Ray Lewington to join the club to provide much needed support for Peter Withe. Instead the Dons turn to former Huddersfield and Scunthorpe manager Mick Buxton. "He's very well respected, especially around the northern scene, and can offer us a great deal," explains Withe.



**MICK BUXTON**

**1 YEAR**

**5 YEARS**

**10 YEARS**

**20 YEARS**





## AFC WIMBLEDON

MANAGER: TERRY BROWN

ASST MANAGER: STUART CASH COACH: SIMON BASSEY

PHYSIO: MIKE RAYNER SPORTS THERAPIST: RHIANNON LUKE

COLOURS: BLUE SHIRTS WITH YELLOW TRIM, BLUE SHORTS WITH YELLOW TRIM, BLUE SOCKS



<input type="checkbox"/>	<input type="checkbox"/>	1	SEB BROWN
<input type="checkbox"/>	<input type="checkbox"/>	2	RYAN JACKSON
<input type="checkbox"/>	<input type="checkbox"/>	3	GARETH GWILLIM
<input type="checkbox"/>	<input type="checkbox"/>	4	MAX PORTER
<input type="checkbox"/>	<input type="checkbox"/>	6	BRETT JOHNSON
<input type="checkbox"/>	<input type="checkbox"/>	7	SAM HATTON
<input type="checkbox"/>	<input type="checkbox"/>	8	RICKY WELLARD
<input type="checkbox"/>	<input type="checkbox"/>	9	CHARLES ADEMENO
<input type="checkbox"/>	<input type="checkbox"/>	10	JACK MIDSON
<input type="checkbox"/>	<input type="checkbox"/>	11	LUKE MOORE
<input type="checkbox"/>	<input type="checkbox"/>	12	CHRISTIAN JOLLEY
<input type="checkbox"/>	<input type="checkbox"/>	13	CHRIS BUSH
<input type="checkbox"/>	<input type="checkbox"/>	14	LEE MINSHULL
<input type="checkbox"/>	<input type="checkbox"/>	15	SAMMY MOORE
<input type="checkbox"/>	<input type="checkbox"/>	16	FRASER FRANKS
<input type="checkbox"/>	<input type="checkbox"/>	17	MAT MITCHEL-KING
<input type="checkbox"/>	<input type="checkbox"/>	18	BRENDAN KIERNAN
<input type="checkbox"/>	<input type="checkbox"/>	19	KIERAN DJILALI
<input type="checkbox"/>	<input type="checkbox"/>	20	JACK TURNER
<input type="checkbox"/>	<input type="checkbox"/>	21	REECE JONES
<input type="checkbox"/>	<input type="checkbox"/>	22	CALLUM McNAUGHTON
<input type="checkbox"/>	<input type="checkbox"/>	23	RASHID YUSSUFF
<input type="checkbox"/>	<input type="checkbox"/>	26	JAMES MULLEY

V

## SWINDON TOWN

MANAGER: PAOLO DI CANIO

ASST MANAGER: FABRIZIO PICCARETA

PHYSIO: PAUL GOOFREY FITNESS COACH: CLAUDIO DONATELLI

COLOURS: RED SHIRTS, RED SHORTS, RED SOCKS



<input type="checkbox"/>	<input type="checkbox"/>	1	MATTIA LANZANO
<input type="checkbox"/>	<input type="checkbox"/>	3	CALLUM KENNEDY
<input type="checkbox"/>	<input type="checkbox"/>	4	ADEN FLINT
<input type="checkbox"/>	<input type="checkbox"/>	5	JOE DEVERA
<input type="checkbox"/>	<input type="checkbox"/>	6	ALBERTO COMAZZI
<input type="checkbox"/>	<input type="checkbox"/>	7	PAUL CADDIS
<input type="checkbox"/>	<input type="checkbox"/>	8	SIMON FERRY
<input type="checkbox"/>	<input type="checkbox"/>	10	MATT RITCHIE
<input type="checkbox"/>	<input type="checkbox"/>	11	ETIENNE ESAJAS
<input type="checkbox"/>	<input type="checkbox"/>	12	ALAN McCORMACK
<input type="checkbox"/>	<input type="checkbox"/>	13	OLIVER RISSE
<input type="checkbox"/>	<input type="checkbox"/>	14	JORDAN PAVETT
<input type="checkbox"/>	<input type="checkbox"/>	15	NATHAN THOMPSON
<input type="checkbox"/>	<input type="checkbox"/>	17	ALAN CONNELL
<input type="checkbox"/>	<input type="checkbox"/>	18	MARK SCOTT
<input type="checkbox"/>	<input type="checkbox"/>	19	MATT CLARK
<input type="checkbox"/>	<input type="checkbox"/>	20	ABDUL SAID
<input type="checkbox"/>	<input type="checkbox"/>	21	LANDER GABILONDO
<input type="checkbox"/>	<input type="checkbox"/>	23	RAFFAELE DE VITA
<input type="checkbox"/>	<input type="checkbox"/>	24	JONATHAN SMITH
<input type="checkbox"/>	<input type="checkbox"/>	26	PHIL SMITH
<input type="checkbox"/>	<input type="checkbox"/>	27	ALESSANDRO CIBOCCHI
<input type="checkbox"/>	<input type="checkbox"/>	28	MILES STOREY
<input type="checkbox"/>	<input type="checkbox"/>	29	LUKÁŠ MAGERA
<input type="checkbox"/>	<input type="checkbox"/>	30	LEIGH BEDWELL
<input type="checkbox"/>	<input type="checkbox"/>	32	AHMED ABDULLA
<input type="checkbox"/>	<input type="checkbox"/>	33	JAKE JERVIS
<input type="checkbox"/>	<input type="checkbox"/>	35	WES FODERINGHAM
<input type="checkbox"/>	<input type="checkbox"/>	36	LIAM RIDEHALGH
<input type="checkbox"/>	<input type="checkbox"/>	37	LOUIS THOMPSON
<input type="checkbox"/>	<input type="checkbox"/>	38	MEHDI KERROUCHE





Up to and including games played on Saturday 5 November 2011.

		HOME						AWAY							
POS	TEAM	P	W	D	L	F	A	P	W	D	L	F	A	GD	PTS
1	SOUTHEND UNITED	17	6	2	1	16	6	6	0	2	17	9	18	38	
2	CRAWLEY TOWN	17	7	1	1	20	8	4	2	2	14	15	11	36	
3	CHELTENHAM TOWN	17	5	1	2	11	6	5	1	3	13	11	7	32	
4	SHREWSBURY TOWN	17	6	2	0	14	5	3	2	4	9	12	6	31	
5	MORECAMBE	17	3	2	3	17	11	5	4	0	17	6	-17	30	
6	SWINDON TOWN	17	5	2	1	18	7	4	0	5	9	8	12	29	
7	OXFORD UNITED	17	4	4	0	17	7	4	1	4	9	9	10	29	
8	BURTON ALBION	17	5	3	1	12	8	3	2	3	14	14	4	29	
9	GILLINGHAM	17	5	2	1	14	7	3	1	5	17	17	7	27	
10	PORT VALE	17	4	1	4	18	17	3	3	2	14	9	6	25	
11	AFC WIMBLEDON	17	3	2	4	17	20	4	2	2	9	11	-5	25	
12	TORQUAY UNITED	17	3	4	2	20	16	3	2	3	8	9	3	24	
13	MACCLESFIELD TOWN	17	4	3	2	12	6	3	0	5	7	11	2	24	
14	ROTHERHAM UNITED	17	4	2	2	12	9	2	4	3	18	20	1	24	
15	ALDERSHOT TOWN	17	3	1	4	8	7	4	1	4	14	13	2	23	
16	BRISTOL ROVERS	17	4	1	4	12	12	2	2	4	11	17	-6	21	
17	ACCRINGTON STANLEY	17	4	1	4	10	12	0	6	2	6	10	-6	19	
18	CREWE ALEXANDRA	17	2	1	5	10	14	4	0	5	9	12	-7	19	
19	HEREFORD UNITED	17	3	1	5	6	17	1	4	3	8	11	-14	17	
20	NORTHAMPTON TOWN	17	1	3	4	6	11	3	1	5	14	17	-8	16	
21	BRADFORD CITY	17	3	1	4	11	11	0	4	5	7	14	-7	14	
22	DAGENHAM & REDBRIDGE	17	2	1	6	9	17	2	0	6	6	13	-15	13	
23	BARNET	17	2	2	5	11	19	1	2	5	9	18	-17	13	
24	PLYMOUTH ARGYLE	17	1	2	5	6	13	1	1	7	7	21	-21	9	

## OTHER LEAGUE 2 GAMES TODAY

ALDERSHOT TOWN v GILLINGHAM

BRADFORD CITY v ROTHERHAM UNITED

BRISTOL ROVERS v BARNET

CHELTENHAM TOWN v PORT VALE

CRAWLEY TOWN v OXFORD UNITED

DAGENHAM &amp; REDBRIDGE v SOUTHEND UNITED

HEREFORD UNITED v BURTON ALBION

MACCLESFIELD TOWN v ACCRINGTON STANLEY

MORECAMBE v CREWE ALEXANDRA

NORTHAMPTON TOWN v SHREWSBURY TOWN

TORQUAY UNITED v PLYMOUTH ARGYLE

## NEXT HOME FIXTURE

npower LEAGUE 2  
SATURDAY 10 DECEMBER  
KICK-OFF 3.00 PM

**AFC WIMBLEDON**  
v  
**ACCRINGTON STANLEY**

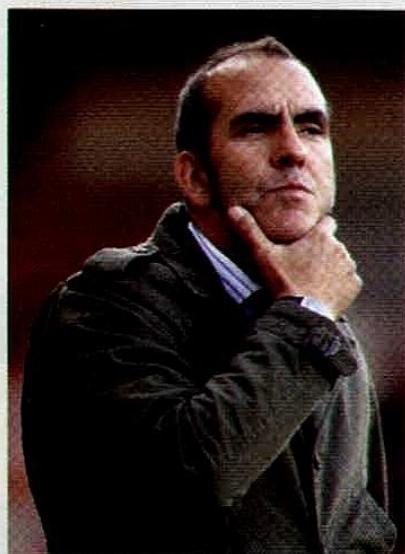
## APPEARANCES

PLAYER	APPEARANCES			GOALS			PLAYER	APPEARANCES			GOALS		
	LGE	CUP	TOTAL	LGE	CUP	TOTAL		LGE	CUP	TOTAL	LGE	CUP	TOTAL
ADEMENO	3 (8)	-(4)	3 (12)	1		1	MCAUGHTON	11	2	13			
BROWN	17	3	20				MIDSON	17	4	21	9	1	10
BUSH	3 (4)	3 (1)	6 (5)				MINSHULL	10 (3)	1 (1)	11 (4)			
DJILALI	3 (3)	2	5 (3)				MITCHEL-KING	-	-	-			
FRANKS	-	1	1				MOORE L	14 (1)	1	15 (1)	1	1	2
GWILLIM	11	1	12	1		1	MOORE S	15 (1)	2 (1)	17 (2)	1		1
HATTON	17	3	20		1	1	MULLEY	1 (3)	2	3 (3)			
JACKSON	-(2)	-(1)	-(3)				PORTER	9 (4)	2 (2)	11 (6)	1		1
JOLLEY	10 (5)	1	11 (5)	6		6	STUART	17	3	20	1		1
JOHNSON	9 (2)	3	12 (2)				TURNER	-	1	1			
JONES	-	-	-				WELLARD	8 (4)	2 (2)	10 (6)	1		1
KIERNAN	-(2)	-	-(2)				YUSSUFF	11 (3)	4	15 (3)	2	2	4





# SWINDON TOWN



## **MANAGER: PAOLO DI CANIO**

Rome-born Paolo Di Canio began his playing career with Lazio in 1985, and moved to Juventus in 1990. After spells with Napoli and AC Milan he came to the UK in 1996 to sign for Celtic, and a year later joined Sheffield Wednesday. He made his mark on English football during his four seasons with West Ham, scoring 48 goals in 118 appearances, including a spectacular strike against Wimbledon in March 2000. Released when the Hammers were relegated from the Premier League, Di Canio spent a season with Charlton and saw out his playing days back in Italy with Lazio and Cisco Roma. In May this year he began his first managerial role, with Swindon Town.

## **1. MATTIA LANZANO**

20-year-old Italian keeper signed from Gavorrana in July on a two-year deal. A youth player with Serie B side Piacenza, he did not appear for their first team.

## **3. CALLUM KENNEDY**

Defender who made just 16 appearances in the past four seasons but is now first-choice left-back. Spent time on loan at Gillingham (2010) and Rotherham (2011).

## **4. ADEN FLINT**

Defender signed last January from Alfreton Town, to where he returned on loan from March till the end of the season. While at Alfreton he went on loan to Matlock Town.



**ADEN FLINT**

## **5. JOE DEVERA**

Right-back who can also play as a centre-back. Di Canio's first signing, last June, he had come through the youth set-up at Barnet to make 177 first-team appearances.

## **6. ALBERTO COMAZZI**

32-year-old Italian defender signed in June from Spezia. A product of AC Milan's youth system, he made 170 appearances for Verona between 2002 and 2007.

## **7. PAUL CADDIS**

Versatile right-sided player, most often appearing at right-back. Signed together with fellow Celtic youth-team graduate Simon Ferry in August 2010. Was made club captain in August this year.

## **8. SIMON FERRY**

Midfielder signed from Celtic in August 2010, following a highly successful season on loan

to Swindon in which he made 42 starts. Had been with Celtic since the age of 12.



**SIMON FERRY**

## **10. MATT RITCHIE**

Attacking left-sided midfielder. A product of Portsmouth's Academy, he had several loan spells, notably with Dagenham & Redbridge in 2008/09. Signed last January following two separate loan spells at Swindon.

## **11. ETIËNNE ESAJAS**

Dutch winger signed in July. Made 65 appearances in three seasons for Sheffield Wednesday, moving there from Vitesse Arnhem. Spent last season in Holland with Helmond Sport.



**ETIËNNE ESAJAS**

## **12. ALAN MCCORMACK**

Irish midfielder signed in July after his release by Charlton. Started at Preston, switching to Southend in 2006, initially on loan, and appeared 130 times for the Shrimpers before joining Charlton in 2010.

## **13. OLIVER RISSER**

Experienced defensive midfielder/centre-back, signed in July. A Namibian international of German descent, he has played in Germany, Iceland, Norway and Finland.

## **14. JORDAN PAVETT**

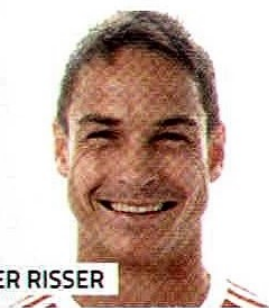
Centre-forward who won a professional





# WHO ARE YOU?

contract with Swindon in a nationwide competition for amateur players. Formerly a youth player with Colchester.



**OLIVER RISSE**

## 15. NATHAN THOMPSON

Right-back who graduated from Swindon's successful youth team, signing pro forms in 2009. Made his first-team debut at the end of last season.

## 17. ALAN CONNELL

Experienced striker signed in July from Grimsby, for whom he scored 29 goals last season. Former Spurs youth player whose other clubs have included Bournemouth, Hereford and Brentford.

## 18. MARK SCOTT

20-year-old keeper who is yet to make his first-team debut. A former Southampton youth player, he joined Aldershot in 2007 and Swindon a year later.

## 19. MATT CLARK

Young central midfielder who can also operate wide on the right and has come through the Swindon youth ranks. Yet to make a competitive first-team appearance.

## 20. ABDUL SAID

Somalian midfielder who joined from Coventry City on a two-year scholarship in 2009 and signed pro forms in the summer.

## 21. LANDER GABILONDO

Basque winger signed in August. A youth player with Real Sociedad, he played for their B team before joining Osasuna in 2009, notching up a total of 159 games in the Spanish 2B division.

## 23. RAFFAELE DE VITA

Italian striker and former Blackburn youth player signed in June. Failed to make the first team at Ewood Park and signed for Livingstone in 2008, scoring 21 goals in 67 appearances.



**RAFFAELE DE VITA**

## 24. JONATHAN SMITH

Midfielder who joined from York in June. The ex-Morecambe youth player signed for Forest Green in 2007 and moved to York in 2010 after over 100 appearances.

## 26. PHIL SMITH

31-year-old keeper who was a youth player with Millwall. After a handful of first-team appearances he dropped into non-league in 2001. After two seasons with both Margate and Crawley he joined Swindon in 2006.

## 27. ALESSANDRO CIBOCCHI

Italian left-back signed in July. Up to then he had spent his entire career in his native Italy, playing in lower-league and regional football.

## 28. MILES STOREY

17-year-old winger and second-year scholar who has stepped up to the first team. Played youth football with Wolves and Coventry and came to the County Ground in 2010.

## 29. LUKÁŠ MAGERA

Czech target man signed in August. Spent the last few seasons with Politehnica Timișoara in Romania, having played previously for Czech side Banik Ostrava, where he came through the youth system.

## 30. LEIGH BEDWELL

Keeper and second-year scholar who came

up through youth ranks. With Phil Smith and Mark Scott both injured, he began 2011/12 on the first-team bench.

## 32. AHMED ABDULLA

Saudi central midfielder on a four-month loan from West Ham United. Joined the Hammers from Arsenal at age 16 and is yet to appear for their first team.

## 33. JAKE JERVIS

Striker on loan from Birmingham until the end of the year. Made two brief first-team appearances for the Blues and spent time on loan at Hereford and Notts County.

## 35. WES FODERINGHAM

Keeper on a three-month loan from Crystal Palace. A youth player with Fulham, he moved to Palace in 2010 and has been on loan to Bromley, Boreham Wood and Histon.

## 36. LIAM RIDEHALGH

Left-back on loan until January from Huddersfield, where he rose through the youth ranks to make 26 appearances for the first team.

## 37. LOUIS THOMPSON

Defender and younger brother of Nathan who broke into the first team this month to make the bench in the FA Cup tie against Huddersfield.

## 39. MEHDI KERROUCHE

Algerian striker signed in July. He has played his football in France, Belgium and Portugal, and most recently for UAE side Al-Oruba, for whom he scored 12 goals in 18 games last season.



**MEHDI KERROUCHE**





Always on the winning side



**Morrisons**  
S O L I C I T O R S

REDHILL | WOKING | WIMBLEDON | CAMBERLEY  
020 8971 1020 | [morrlaw.com](http://morrlaw.com) | [info@morrlaw.com](mailto:info@morrlaw.com)

5th Floor, Sterling House, 6-10 St Georges Road, Wimbledon SW19 4DP

Morrisons Solicitors LLP are authorised and regulated by the Solicitors Regulation Authority registered number 445704

**Supporting  
the grass roots**



**Football**   
**Foundation**



• FUNDING PARTNERS •

[www.footballfoundation.org.uk](http://www.footballfoundation.org.uk)

*improving facilities • creating opportunities • building communities*

Charity No 1079309 Company No 3876305





## Make a great save... on your insurance this season!

A-Plan has teamed up with the Dons to provide great value Motor & Home Insurance.

We will donate **£25** to the club every time a new policy is taken out -  
just mention the Dons when calling.

**Can we save you money?** Call us and see - you can't lose and the club wins every time!

A-Plan Insurance, 52 Wimbledon Hill Road, Wimbledon, SW19 7PA

# 0208 944 4121

Authorised and regulated by the Financial Services Authority.



## Wimbledon School of English *Where quality really matters*

Improve your job prospects or just your general communication skills by taking one of our  
English or foreign language evening courses



### English Language Evening Classes



Preparation for the IELTS Examination  
General English with First Certificate Preparation  
Cambridge Certificate of Proficiency in English  
Test Centre for IELTS and Cambridge Exams  
Full time courses also available



Tel: 020 8947 1921    [info@wimbledon-school.ac.uk](mailto:info@wimbledon-school.ac.uk)    [www.wimbledon-school.ac.uk](http://www.wimbledon-school.ac.uk)

### Foreign Language Evening Classes



(Run in conjunction with Cactus Language Courses UK)  
Chinese, French, German, Italian & Spanish  
For further information and to enrol on a  
foreign language course please book on line with Cactus:  
[www.languagecoursesuk.co.uk/lon](http://www.languagecoursesuk.co.uk/lon)





# WE'VE MET BEFORE

THE RECENT JOHNSTONE'S PAINT TROPHY MEETING WITH SWINDON TOWN REVIVED ANOTHER RIVALRY FROM THE DAYS OF WIMBLEDON'S FIRST ENTRY INTO LEAGUE FOOTBALL, WRITES **STEPHEN CRABTREE**.

**Y**OU HAVE TO GO BACK TO THE MONTHS JUST AFTER MRS THATCHER was elected as Prime Minister for the first clash between the sides who face each other this afternoon. Having been elected to the Football League in the summer of 1977, the Dons won promotion during their second season to set up a Division Three meeting at Plough Lane in October 1979. 4,207 fans watched as two goals from Alan Cork, one either side of half-time, gave Dario Gradi's side just their fourth win of the campaign.

The Robins were back in town the following month for a League Cup Fourth Round clash played in front of a bumper 7,478 crowd, boosted by a sizeable contingent who had travelled up from the west. Chic Bates hooked home a late winner to earn the visitors a quarter-final tie with Arsenal. Swindon forced a draw at Highbury, and Bob Smith's side won a memorable replay. They bowed out when Wolves narrowly beat them in a two-legged semi-final.

In mid February the Dons made their debut at the County Ground and lost 2-1; their first foray into the third tier of English football ended in relegation. Two years later, now managed by Dave Bassett, Wimbledon were back, but both clubs were set for a disappointing campaign. A 4-1 victory in Wiltshire on the opening day should have set Swindon up for a fine season, but by the time of January's 1-1 draw in SW19 both sides were in the bottom four and ended up going down together.

The next season, as the two clubs began their ascents to the very top of the English game, both were among the favourites for promotion. More than 8,000 were in attendance as the Dons rode their luck to win 1-0 at second-placed Swindon in late December. By the time

of the return, a scoreless draw on April Fools Day, the visitors had not won in eight matches while Bassett's boys were in the middle of a 22-game unbeaten run that would carry them to the title.

Wimbledon reached the top flight in 1986, but Swindon's climb took seven years longer. Having led the Robins to promotion in the spring of 1993, Glenn Hoddle departed for Chelsea and left John Gorman in charge. Sadly, the Scot was unable to keep Wiltshire's finest in the Premiership for more than a season. Goals from John Fashanu, Gary Blissett and Dean Holdsworth gave the Dons an easy 3-0 win at Selhurst Park in November and left the visitors rock bottom.

Wimbledon travelled down the M4 to administer the last rites in late April. A crowd of 12,237 saw Fashanu give the Londoners the lead

with what proved to be the last goal of his eventful eight-year Dons career. Nicky Summerbee levelled before Robbie Earle scored twice to restore the advantage. Warren Barton's own goal with ten minutes left could have set up an exciting finish, but Holdsworth quickly swept home the fourth to complete a victory that confirmed

Swindon's relegation.

The Robins have spent most of the decade and a half since then playing in the third tier of English football, while the Dons' relegation from the Premier League in the millennium year was quickly followed by the formation of a new club in 2002. Swindon dropped out of League 1 last year as AFC Wimbledon competed their remarkable nine-year rise from the nether reaches of the non-league game. The JPT fixture played 11 days ago marked the resumption of an old rivalry.



Alan Cork heads home the Dons' second goal at Plough Lane in October 1979

DONS v ROBINS					
1979-2011					
	V				
P	W	D	L	F	A
11	5	3	3	17	12





It proved to be their top-flight swansong. John Fashanu and Lawrie Sanchez, never easy bedfellows in the Crazy Gang team that had stormed into Division One eight years earlier, cut contrasting figures at the County Ground. The scorer of the winner in the 1988 FA Cup final looked isolated as he struggled to make an impression in a sorry-looking Swindon side, while the leader of the Dons' attack for so long scored his last, and possibly best, goal for the club.

It is a measure of how far today's teams have fallen that their last league meeting came in the Premier League. After the excitement of promotion under Glenn Hoddle, Swindon fans had to endure a season of humiliation as John Gorman proved himself unequal to the task of keeping their team up. It fell to the Dons to deliver the killer blow as a dismal Robins' campaign reached its inevitable conclusion.

Having recently beaten both title favourites, Blackburn Rovers and Manchester United, Joe Kinnear's men arrived in Wiltshire in eighth place and hungry to feast on some easier pickings. They had the advantage of that astonishing early goal from Fashanu. Receiving a long clearance, he controlled under pressure from Brian Kilbane, worked the ball onto his right foot and curled the ball over the amazed Nicky Hammond from fully 40 yards.

Both Fashanu and goalkeeper Hans Segers were injured and replaced at half-time. As the

## CHOICE ENCOUNTER

23 April 1994  
FA Carling Premiership


### SWINDON TOWN

Summerbee 67,  
Barton (o.g.) 80

2-4

### WIMBLEDON

Fashanu 13, Earle 71, 75,  
Holdsworth 81



The travelling Dons look on as John Scales clears from Shaun Taylor

visitors regrouped, Swindon equalised when Nicky Summerbee fired home after Jan Åge Fjørtoft had flicked on Paul Bodin's cross. But that goal merely spurred the Dons into concerted action, and Robbie Earle scored twice from close range as the home defence panicked when put under pressure from crosses, first from Andy Clarke and then from Warren Barton.

Barton then turned a Summerbee corner past his own keeper, but that just prompted Vinnie Jones to release Dean Holdsworth, and the current Aldershot manager drove home the 92nd goal Swindon had conceded that season. The result rubber-stamped the Robins' relegation.

Gorman admitted afterwards that "It wasn't the way to go down. After the pride we had shown in recent weeks, it was our worst performance for a long time."

Fashanu, who joined Aston Villa that summer, remains a controversial figure among Dons supporters, while Sanchez – never a fans' favourite during his playing days – gained respect for his recognition of AFC Wimbledon from the start. Seventeen years on from that meeting, "The Mexican" is now attempting to preserve Barnet's League status after a nomadic managerial career, while "Fash the Bash" maintains a high profile through his various media roles.

**SWINDON TOWN:** Hammond, Fenwick, Bodin, Nijholt, Kilbane, Taylor, Horlock, Summerbee, Fjørtoft, Scott, Sanchez.

**WIMBLEDON:** Segers (Sullivan 45), Barton, Scales, Blackwell, Elkins, Fear, Jones, Earle, Gayle, Fashanu (Clarke 45), Holdsworth.





# CHAK89

*a spice above the rest*

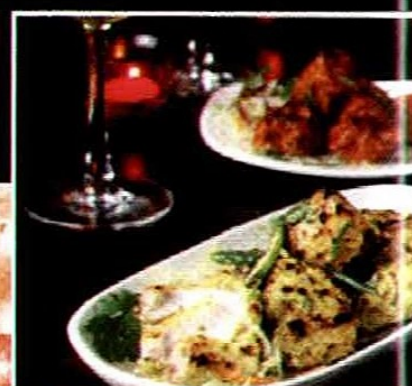
Award Winning Indian Restaurant

Array of Gourmet Asian Cuisine

Stunning Setting

Bar & Lounge Area to relax & unwind

Perfect Venue for Private Parties



105 Bond Road, Mitcham, Surrey CR4 3HG

**020 8646 2177**

INFO@CHAK89.COM

WWW.CHAK89.COM





## Help the club and £1,000 could be winging its way to you



The Dons Draw is a monthly lottery that pays out over £2,000 to entrants. There are now six prizes each month, with values of £1,000, £500, £250, £150, £100 and £75. Win or lose, your stake in the draw goes to pay for and improve Kingsmeadow.

Each lottery ticket costs £2 per month, and you can buy as many or as few as you like.

Even a single ticket helps the Trust and gives you a chance of winning.

Signing up is easy, and can be done in two ways:

- 1 Go to [www.afcwimbledon.co.uk/donsdraw](http://www.afcwimbledon.co.uk/donsdraw) and sign up online.
- 2 If you prefer to fill in a paper form, download one from the website or pick one up on a matchday from the Dons Trust table by the back bar.

Return the completed form to the Trust table or post it back to the club.

The Dons Draw is a lottery run by the Dons Trust and registered with, and authorised by, the Royal Borough of Kingston upon Thames. The draw takes place on or around the 15th of each month.

Entrants must be aged 16 or over, and have a bank account. To minimise costs (and maximise the prizes and fundraising), money is collected from entrants monthly by direct debit.

[www.afcwimbledon.co.uk/donsdraw](http://www.afcwimbledon.co.uk/donsdraw)

# KINGSMEADOW

FUNCTIONS

ROOM HIRE

MEETINGS

PARTIES



The Cherry Red Records Fans' Stadium offers three function rooms that can cater for a variety of events, from wedding receptions and corporate events to 21st birthday celebrations and smaller private gatherings.

The variety of function rooms and ample free parking available makes Kingsmeadow the ideal place to host your party or event.

To check availability of any of the above rooms, as well as room hire rates, please either email us at [functions@afcwimbledon.co.uk](mailto:functions@afcwimbledon.co.uk) or call us on 020 8547 3396 between the office hours of 9am-5pm on weekdays.

**If you're an AFC Wimbledon shareholder or season ticket holder,  
be sure to ask about the 15% Dons Discount.**



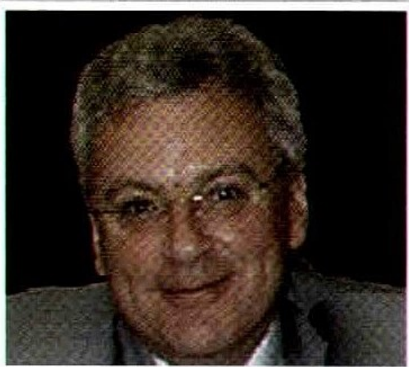
# DONS TRUST BOA

## THEY WANNA BE ELECTED!

**W**ITH JUST OVER TWO weeks left until the close of voting in this year's Dons Trust Board elections, we've invited each of the five candidates to say in a few words why they think they deserve your vote.

The candidates will be out and about today in and around the stadium to answer your questions and talk to you about their ideas and plans should they be elected. They'll all be wearing yellow and blue rosettes so that you can identify them. If you miss them today, you can put questions to them on the special election forum, where all candidates have their own sections and have been engaging with members, at <http://s.coop/dtelect>.

All Dons Trust members should by now have received a ballot paper, either electronically or in the post, and campaigning has now been taking place online for two weeks. If you haven't received your ballot paper and election communications, or if you want to swap from paper to electronic voting or vice versa, then email [elections@thedonstrust.org](mailto:elections@thedonstrust.org) as soon as possible.



### DAVID GROWNS

I have been Vice Chair of the Dons Trust Board for the past two years and I'm seeking re-election. I have begun a sustained change in the way we communicate and I want to continue moving things forward with communications, as well as increasing Kingsmeadow's capacity and continuing the search for a new stadium. I believe the experience and knowledge I have gained working on your behalf will enable me to make further significant contributions to the continued success of our club over the next two years. I am committed to using that experience to make sure that the club is run sensibly, sustainably and in all our best interests.

Please continue to give me your support! Thank you.



### NICOLE HAMMOND

When I stood for election two years ago, my main aims were for Wimbledon to remain a fans-owned club, and to work towards moving back to Wimbledon. Having chaired the Survey Working Group, it was gratifying to learn that these priorities are also shared by most Dons fans.

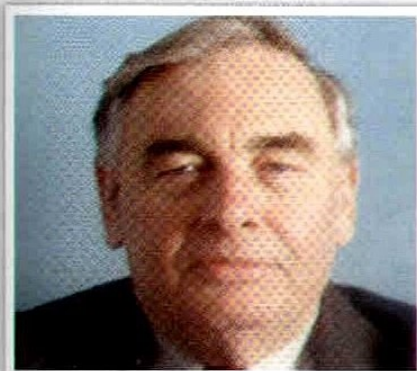
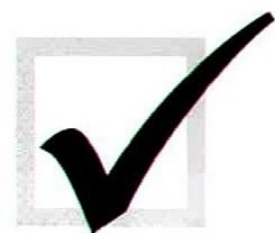
It's been a genuine pleasure to serve on a Board which has such common purpose and drive; if re-elected, I aim to continue with the group, seeking and incorporating members' input into the new strategy for the Club and Trust. Additionally, I worry that the role of the Trust is being gradually forgotten: we own a League club! Who wouldn't want to be a part of that? I intend to increase membership by raising the profile of our fantastic ownership model.

## REMEMBER... VOTING CLO





# RD ELECTION



## TOM ADAM

I have been a member of the Dons Trust Board for more than nine years. During that time I chaired the Board for over two years, and I also chair the Stadium Working Group. I am seeking re-election for membership of the Dons Trust Board so that I can continue to represent the interests of all members in shaping and discharging the Board's responsibilities as well as 'seeing the job through' in terms of the further Kingsmeadow development until we can build a new stadium, given that I've been at the heart of our current stadium development and new stadium search. I will also give advice and support, as I have done for several years, in regard to obtaining a new stadium back home in Wimbledon.



## ZOE LINKSON

With the election in full swing, many will have had a chance to cast votes already. If you've already voted for me, thank you.

I believe being a Trust member is an important part of being a Wimbledon fan, and I'd like the opportunity to play my part on the Board to ensure our club is run in the best interests of us all.

We've achieved so much together – more than any of us would have dared wish for – but we still have dreams of a home in Wimbledon, and I would like to represent your views and opinions as we continue our journey.

I hope I can win your support in this election. I can always be reached on [zoelinkson@blueyonder.co.uk](mailto:zoelinkson@blueyonder.co.uk) if you have questions for me.



## KRIS STEWART

If you do me the honour of re-electing me, my priorities for my two-year term will be:

- making sure your Board is fully accountable to you
- making sure your Board does its job – managing the Football Club Board
- pressing hard for a return home.

The best way of making these things happen is to have a dynamic Board with the right mix of experience and fresh ideas. Nicole and David have shown their value to the board since being elected, and Zoe has shown through her hard work for the Club and involvement in Trust activities what an asset she would be. I hope you can give me one of your votes, and I hope you can join me in voting for Zoe, Nicole and David.

<http://electkris.wordpress.com>

## SES AT 5.00PM ON MONDAY 5 DECEMBER





**TomTom** 

# BREAK FREE!



## FROM TRAFFIC WITH TOMTOM HD TRAFFIC

Are you fed up with sitting in traffic? TomTom HD Traffic is the UK's only system that monitors all the roads - in real time. And if there is a quicker route, you get it immediately, making sure you always get the fastest route through traffic jams.

- ✓ **The most accurate traffic information**
- ✓ **The widest road coverage**
- ✓ **Updates every 2 minutes - that's 7 times more often than any other provider**



HD Traffic is available on TomTom LIVE devices, including Via LIVE 120, Via LIVE 125, GO LIVE 825, GO LIVE 1000, GO LIVE 1005. For more information visit **tomtom.com**



# NEWS FROM THE DONS TRUST

## IT ONLY TOOK NINE YEARS – BUT WHAT HAPPENS NEXT?

KATE TERRIERE REPORTS ON THE PROGRESS OF THE STRATEGY REVIEW SHE IS LEADING ON BEHALF OF THE DONS TRUST BOARD.

**A**S SOME DONS TRUST MEMBERS MAY be aware, we have been writing the new strategy for the football club. While we have achieved significant success over recent years, we needed to take stock and look at where the club goes next. A strategy is a vital part of running any organisation as it sets the direction of the business – all activities and decision-making should be in line with agreed aims and objectives.

Before we could go about writing the new strategy we felt we should review our performance against our previous strategy, to celebrate where we had met objectives but also to acknowledge where we had not. In September a paper was prepared for December's AGM that set out that performance review, identified our vision and values, and defined our revised aims. These are outlined below:

### VISION

"To maintain supporter ownership of a successful, financially stable, professional football club playing at the heart of our communities."

### VALUES

- Passion and commitment.
- Integrity.
- Open and honest communication.
- Involving people in decisions.
- Respecting other people's opinions.

We will not forget the past, but will look to the future.

### AIMS

- Continuing with Trust ownership.
- Ensuring sound financial management and governance.
- Actively engaging and supporting all our communities.
- Maintaining a successful first team through an appropriate supporting player and coaching infrastructure.
- Obtaining a new stadium.
- Improving communication.
- Increasing fundraising.

The strategy sets the framework for all activities carried out. Responsibility for delivery is generally shared between the Dons Trust Board and the Football Club Board. The Trust Board may be responsible for some specific actions, but generally it has a strategic role.

We have since been working on developing the objectives that sit below our aims. These go into more detail about what the aims actually mean in practice and the goals that we will work towards. The objectives will provide the foundation of our actions over future years and guide our business decision-making. The strategy is currently being reviewed by the Dons Trust Board and the Football Club Board. The final version, setting out our vision, values, aims and objectives, will be shared with Dons Trust members at the AGM in December.

We are also working on an action plan to support the strategy. The action plan provides a further level of detail setting out clear actions against all objectives and with responsibilities assigned to individuals. It will also summarise the anticipated outputs of each action and the deadlines for delivery. Actions will be split between the Dons Trust Board and the Football Club Board, and each is currently developing their respective action list. This will be a "live" document, so that actions can be added and removed (once complete) as appropriate.

Having produced the strategy, it is important that we keep the momentum going and check our progress against it. We will therefore regularly review our performance against each aim and objective and report this to Trust members. It is proposed that this review will be conducted three times a year – in line with the AGM/SGM cycle.

Our next challenge is to look at governance across the club. We believe that we need clear guidelines on roles and responsibilities, reporting lines and approaches to decision-making. I have been liaising with Supporters Direct to learn from their experiences as well as looking at different models at other clubs so that we can develop the most appropriate and efficient structure for us. We have lots to do, but we made it to the Football League in only nine years, so this part should be simple!

### THE DONS TRUST BOARD

Tom Adam, Simon Bath, Matthew Breach, David Gowns, Nicole Hammond, Sean McLaughlin, Iain McNay, Kris Stewart and Kate Terriere.







# WIN A STAR WHERE YOU ARE!

**HOW WOULD YOU SPEND TIME WITH YOUR  
FAVOURITE NPOWER FOOTBALL LEAGUE STAR?**

- A special training session for your team?
- Treat your office to a unique pep talk?
- A League manager dropping in at your Christmas party?

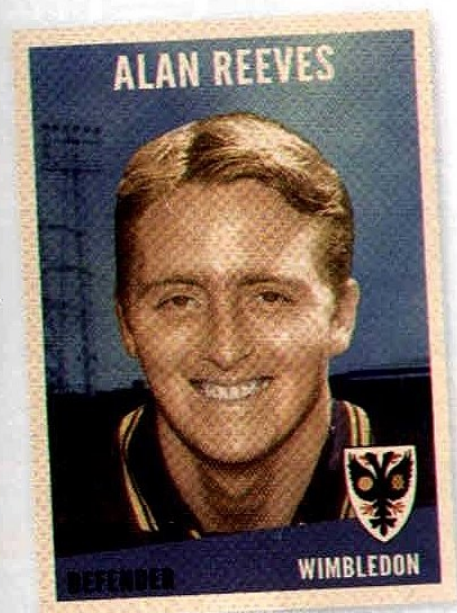
Here's how... simply tell us which Football League star you'd like to meet, what you'd like to do and we could make it become a reality.

**Visit [npower.com/star](http://npower.com/star)**

Closing date and terms and conditions are available at [npower.com/star](http://npower.com/star)  
Restrictions on star availability, locations and activities apply

**npower**





**"REEVESY" SPENT THE LAST 12 YEARS OF HIS PLAYING CAREER WITH WIMBLEDON AND SWINDON – WHERE HE WAS RELEASED BY ONE ROBINS MANAGER AND THEN RE-SIGNED BY THE NEXT!**

## ALAN REEVES

**B**IRKENHEAD-BORN ALAN REEVES and his twin brother both played in the Football League – but while Alan was a central defender, David was a striker, with Carlisle and Preston. Alan began in local non-league football with Heswall (alongside his brother) and was signed for a nominal fee by Norwich City in 1988, but he didn't make a first-team appearance for the Canaries and was sent on loan to Gillingham the following season.

A £10,000 fee took Alan back to the North-West with Chester City, and he spent two seasons at Sealand Road before joining Rochdale in 1991. He would prove an immensely popular figure during his four years at Spotland, being voted Player of the Year for 1993/94, when he also featured in the PFA Division 3 team of the season, alongside his twin. Some impressive displays had several teams courting him, but it was a surprise when Wimbledon manager Joe Kinnear smashed the Rochdale transfer record, paying £200,000 to bring him to Selhurst Park as a replacement for the departing John Scales.

Those were big shoes to fill. Reeves found it tough to win a regular place at the heart of the Dons defence when he was competing with homegrown talent in the shape of Dean Blackwell, Chris Perry, Brian McAllister and

Scott Fitzgerald. But what he lacked in top-flight quality, Alan always tried to make up for with endeavour, and he remained a popular character in the dressing room.

In 1997 there was talk of him returning to Norwich as part of a swap deal that would bring Darren Eadie to London. It didn't materialise, and the following year Alan almost moved back to Lancashire with Preston – then managed by former Dons captain Gary Peters – but he eventually signed for Swindon Town on a Bosman free transfer.

He struggled at first to win over the Robins fans, and his fortunes fluctuated under a succession of managers at the County Ground. Steve McMahon signed him, Colin Todd released him – and then Andy King reinstated him as captain! After three red cards in 2002 he lost the armband, but three years later he became Swindon's player-coach and later assistant manager. A broken leg in August 2005 signalled the end of his playing days.

Alan left the club the following year and briefly registered as a player with Sutton United before becoming Scott Fitzgerald's number two at Brentford. When the pair left Griffin Park in April 2007, Alan was unsuccessfully interviewed for the vacant manager's job at Crawley Town. He has since returned to the North-West.

### Full Dons debut

10 September 1994  
FA Carling Premiership  
Leicester City (h) W 2-1

### Dons career stats

Appearances	57
Goals	4





*Coca-Cola*

Leeds United F.C.

*Coca-Cola*

Brighton & Hove Albion F.C.

*Coca-Cola*

Blackpool F.C.

*Coca-Cola*

Leicester City F.C.

*Coca-Cola*

Southampton F.C.

*Coca-Cola*

Derby County F.C.

*Coca-Cola*

Nottingham Forest F.C.

*Coca-Cola*

Peterborough United F.C.

*Coca-Cola*

Crystal Palace F.C.

*Coca-Cola*

Birmingham City F.C.

*Coca-Cola*

Millwall F.C.

*Coca-Cola*

Bristol City F.C.

*Coca-Cola*

Reading F.C.

*Coca-Cola*

Doncaster Rovers F.C.

*Coca-Cola*

Coventry City F.C.

*Coca-Cola*

West Ham United F.C.

*Coca-Cola*

Barnsley F.C.

*Coca-Cola*

Portsmouth F.C.

*Coca-Cola*

Watford F.C.

*Coca-Cola*

Ipswich Town F.C.

*Coca-Cola*

Hull City A.F.C.

*Coca-Cola*

Burnley F.C.

*Coca-Cola*

Carlisle United F.C.

*Coca-Cola*

Middlesbrough F.C.

*Coca-Cola*

Sheffield Wednesday F.C.

*Coca-Cola*

A.F.C. Bournemouth

*Coca-Cola*

Carlisle United F.C.

*Coca-Cola*

Yeovil Town F.C.

*Coca-Cola*

Leyton Orient F.C.

*Coca-Cola*

Tranmere Rovers F.C.

*Coca-Cola*

Preston North End F.C.

*Coca-Cola*

Wycombe Wanderers F.C.

*Coca-Cola*

Bury F.C.

*Coca-Cola*

Sheffield United F.C.

*Coca-Cola*

Chesterfield F.C.

*Coca-Cola*

Charlton Athletic F.C.

*Coca-Cola*

Hartlepool United F.C.

*Coca-Cola*

Colchester United F.C.

*Coca-Cola*

Exeter City F.C.

*Coca-Cola*

Rochdale A.F.C.

*Coca-Cola*

Huddersfield Town F.C.

*Coca-Cola*

Brentford F.C.

*Coca-Cola*

Stevenage F.C.

*Coca-Cola*

Walsall F.C.

*Coca-Cola*

Milton Keynes Dons F.C.

*Coca-Cola*

Oldham Athletic A.F.C.

*Coca-Cola*

Scunthorpe United F.C.

*Coca-Cola*

Notts County F.C.

*Coca-Cola*

Southend United F.C.

*Coca-Cola*

Rotherham United F.C.

*Coca-Cola*

Barnet F.C.

*Coca-Cola*

Dagenham & Redbridge F.C.

*Coca-Cola*

Morecambe F.C.

*Coca-Cola*

Bristol Rovers F.C.

*Coca-Cola*

Crawley Town F.C.

*Coca-Cola*

Cheltenham Town F.C.

*Coca-Cola*

Plymouth Argyle F.C.

*Coca-Cola*

Accrington Stanley F.C.

*Coca-Cola*

A.F.C. Wimbledon

*Coca-Cola*

Aldershot Town F.C.

*Coca-Cola*

Hereford United F.C.

*Coca-Cola*

Macclesfield Town F.C.

*Coca-Cola*

Swindon Town F.C.

*Coca-Cola*

Burton Albion F.C.

*Coca-Cola*

Crewe Alexandra F.C.

*Coca-Cola*

Oxford United F.C.

*Coca-Cola*

Torquay United F.C.

*Coca-Cola*

Bradford City A.F.C.

*Coca-Cola*

Gillingham F.C.

*Coca-Cola*

Port Vale F.C.

*Coca-Cola*

Northampton Town F.C.

*Coca-Cola*

Shrewsbury Town F.C.





## MANAGERIAL RECORDS

### Terry Brown

Played 17 Won 7 Drawn 4 Lost 6 For  
26 Against 31  
Av Pts/game 1.47  
Biggest Win(s) AFC Wimbledon 4  
Cheltenham 1 (17/09/2011). Biggest  
Loss(es) Macclesfield 4 AFC  
Wimbledon 0 (27/08/2011).

### Paolo Di Canio

Played 17 Won 9 Drawn 2 Lost 6 For  
27 Against 15  
Av Pts/game 1.71  
Biggest Win(s) Swindon 4 Barnet 0  
(24/09/2011). Biggest Loss(es) Burton  
Albion 2 Swindon 0 (17/09/2011).

## MANAGER HEAD TO HEAD RECORD

Played...1 Terry Brown.....0 Paolo Di Canio.....0  
Draws ...1 Goals 1 Goals 1

### Player with the most...

#### shots

Jack  
Midson 26

#### shots on target

Jack  
Midson 15

#### shots off target

Christian  
Jolley 13

#### assists

Samuel  
Hatton 6

#### crosses

Samuel  
Hatton 36

#### fouls

Jamie  
Stuart 20

#### free-kicks-won

Sammy  
Moore 25

#### tackles

James  
Mulley 4



### Player with the most...

#### shots

Matt  
Ritchie 42

#### shots on target

Matt  
Ritchie 24

#### shots off target

Matt  
Ritchie 18

#### assists

Matt  
Ritchie 5

#### crosses

Callum  
Kennedy 29

#### fouls

Raffaele  
De Vita 24

#### free-kicks-won

Paul  
Caddis 34

#### tackles

Ahmed  
Abdulla

## GAMES SINCE

7	a win	0
5	a home win	0
3	an away win	0
4	a defeat	9
2	a home defeat	8
2	an away defeat	4
1	a score draw	1
0	a no score draw	3
1	conceding a goal	0
1	scoring a goal	0
4	conceding > 1	7
5	scoring > 1	0
0	keeping a clean sheet	2
0	failing to score	3
9	back to back wins	4
4	back to back defeats	15
0	gaining a point	0
0	losing a point	1
9	win by > one	0
4	loss by > one	9

## SHARP SHOOTERS

AFC Wimbledon	FL Cup	Tot	Swindon	FL Cup	Tot		
Jack Midson	9	1	10	Mehdi Kerrouche	6	2	8
Christian Jolley	6	0	6	Matt Ritchie	6	0	6
Rashid Yussuff	2	2	4	Cristian Montano	5	0	5

## TEAM HEAD TO HEAD RECORD

Played.....0 AFC Wimbledon wins .....0 Swindon wins .....0  
Draws .....0 Goals 0 (0 per game) Goals 0 (0 per game)  
0-0's.....0 Times failed to score 0 Times failed to score 0

### Biggest League win at AFC Wimbledon for each team:

No wins for AFC Wimbledon

No wins for Swindon

## PRESS ASSOCIATION Sport



## LEAGUE STATS



11	Position	6
17	Played	17
7	Won	9
4	Drawn	2
6	Lost	6
26	Goals For	27
31	Goals Against	15
25	Points	29



### Record Against Top Half of Table

W	D	L	RANK	W	D	L	RANK
4	1	2	4	4	0	4	7

### Record Against Bottom Half of Table

W	D	L	RANK	W	D	L	RANK
3	3	4	18	5	2	2	9

### Record When Scoring First

W	D	L	RANK	W	D	L	RANK
5	1	0	17	8	1	1	8

### Record When Conceding First

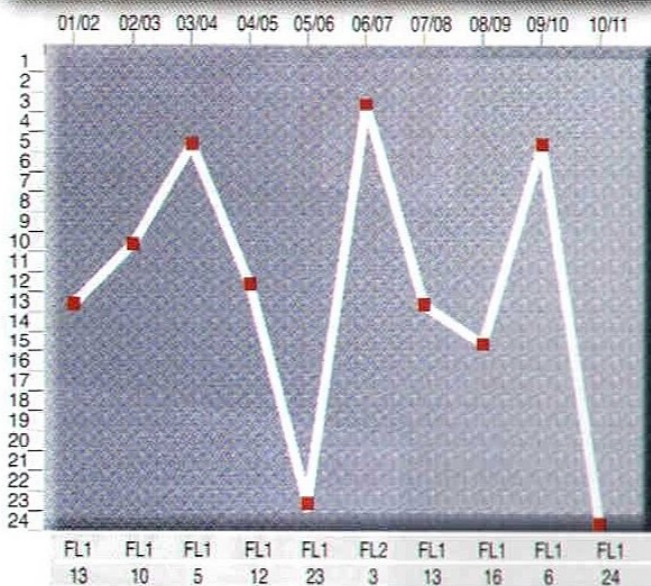
W	D	L	RANK	W	D	L	RANK
2	2	6	4	1	0	5	11

### Match Scores

Wins: 2-0[2], 2-1[2], 3-1[1], 3-2[1],  
4-1[1], Losses: 0-3[1], 0-4[2], 1-3[1],  
2-3[1], 2-5[1], Draws: 0-0[1], 1-1[3]

Wins: 1-0[1], 2-0[4], 3-0[2], 3-2[1],  
4-0[1], Losses: 0-1[2], 0-2[2], 1-2[2],  
Draws: 0-0[1], 3-3[1]

## SWINDON - TEN SEASON RECORD



\*up to and including 13/11/2011





# CHECK YOURSELF

ARE YOU AGED 16 - 24?

DO YOU LIVE

IN LONDON?

1 in 10 young people are infected with Chlamydia, but don't know it.

Chlamydia is a sexually transmitted infection, which often has no symptoms. If left untreated it can lead to serious health problems, such as infertility (unable to have children). Thankfully, Chlamydia is very easy to treat with antibiotics.

Why not check yourself with a free self-testing kit?

WANT A FREE CHLAMYDIA TESTING KIT SENT TO YOU?  
GO TO [WWW.CHECKYOURSELF.ORG.UK](http://WWW.CHECKYOURSELF.ORG.UK)

For contact details go to [www.checkyourself.org.uk](http://www.checkyourself.org.uk)

**NHS**



## SHARP SHOOTERS

Player	Team	Lge	Cup	Ttl
Izale McLeod	Barnet	9	3	12
Danny Hylton	Aldershot	9	3	12
Lewis Grabban	Rotherham	9	2	11
Justin Richards	Burton Albion	9	1	10
Jack Midson	AFC Wimbledon	9	1	10
Matthew Tubbs	Crawley Town	9	1	10
Wesley Thomas	Bournemouth	8	0	8
Billy Kee	Burton Albion	8	0	8
Leon Clarke	Chesterfield	8	0	8

## WHERE TO SEE GOALS (By Ground)

Ground	Home Team	M	Gls	G/Mt
Cherry Red Records	Wimbledon	9	37	4.11
Plainmoor	Torquay	9	36	4.00
Vale Park	Port Vale	9	35	3.89
Globe Arena	Morecambe	8	28	3.50
Underhill Stadium	Barnet	9	30	3.33
County Ground	Swindon	8	25	3.12
Broadfield Stadium	Crawley Tn	9	28	3.11
Alexandra Stadium	Crewe	8	24	3.00
The Kassam Stadium	Oxford Utd	8	24	3.00
L.B. Barking & Dag	Dag & Red	9	26	2.89
Coral Windows	Bradford	8	22	2.75
Memorial Stadium	Bristol Rvs	9	24	2.67
Don Valley Stadium	Rotherham	8	21	2.62
KRBS Priestfield Stad	Gillingham	8	21	2.62
Edgar Street	Hereford	9	23	2.56
Fraser Eagle Stadium	Accrington S	9	22	2.44
Roots Hall	Southend	9	22	2.44
Home Park	Plymouth	8	19	2.38
Greenhous Meadow	Shrewsbury	8	19	2.38
Pirelli Stadium	Burton Albion	9	20	2.22
Whaddon Road Ground	Cheltenham	8	17	2.12
Sixfields Stadium	Northampton	8	17	2.12
Moss Rose Ground	Macclesfield	9	18	2.00
The EBB Stadium	Aldershot	8	15	1.88

## TEAM LEADERS

Team with the most..

shots on target 117 Southend. shots off target 141 Crawley Town. corners 141 Dag & Red. hit woodwork 8 Aldershot. offsides 61 Shrewsbury. fouls 214 Oxford Utd. yellow cards 36 Southend. red cards 5 Accrington Stanley.

## PLAYER POWER

Player with the most..

Shots 44 Gareth Evans (Rotherham). Shots on target 25 Ryan Hall (Southend). Shots off target 26 Matthew Tubbs (Crawley Town). Assists 9 Ryan Hall (Southend). Crosses 69 Lionel Ainsworth (Shrewsbury). Offsides 26 Izale McLeod (Barnet). Fouls 37 Matt Harrold (Bristol Rvs). Free-kicks won 34 Paul Caddis (Swindon).

# PRESS ASSOCIATION Sport

2011/12 SEASON



## GOAL COUNTER 573

RIGHT FOOT 311 goals

54.3%

LEFT FOOT 146 goals

25.5%

HEADERS 106 goals

18.5%

Own goals 8 (1.4%), Other body part 2 (0.2%)

## QUICK-FIRE GOALS

From the start of a match

Ben Tomlinson (Macclesfield vs Morecambe) 0:07

By a substitute after coming on

Jeff Goulding (Acc Stanley vs Cheltenham) 0:31

## DISCIPLINARY



3.2 cards per match



0.2 cards per match

## QUICK-FIRE CARDS

From the start of a match

Jamie Stuart (Wimbledon vs Bristol Rovers) 6:40

By a substitute after coming on

Andrew Fleming (Southend vs Morecambe) 1:29

## SUB TOTALS

Subs used ..... 1010

Offsides ..... 981

Corners ..... 2237

Shots Off Target ..... 2264

## BEAT THE TRAFFIC

Total number of goals you would have missed by leaving every match ten minutes early

0 8 6

In the npower Football League Two this season there have been 2249 shots on target, goals constitute 25.5% of all shots (doesn't include own goals). The woodwork has come to the rescue of the defending side on 84 occasions (the biggest beneficiaries being Northampton 7).

There have been 60 penalties awarded this season and of those 54 have been scored (a success rate of 90.0%). Gillingham have been awarded most penalties - 9. Dag & Red have given most penalties away 7. The team to score the most penalties is Gillingham 8. AFC Wimbledon missed 2 penalties in the npower Football League Two this season.

## RESULTS

How many times each result has occurred this season - home sides score shown first

0-0	8
0-1	19
0-2	12
0-3	6
0-4	3
0-5	-
1-0	17
1-1	24
1-2	12
1-3	6
1-4	1
1-5	-
1-6	1
2-0	20
2-1	16
2-2	10
2-3	6
2-4	-
2-5	3
3-0	8
3-1	11
3-2	5
3-3	3
3-4	-
3-5	-
3-6	1
4-0	3
4-1	4
4-2	1
4-3	1
4-4	-
4-5	-
5-0	-
5-1	1
5-2	1
5-3	-
5-4	-
5-5	-
6-0	1

\*up to and including 13/11/2011



# TAKING CARE OF BUSINESS

## IVOR HELLER INTRODUCES TODAY'S MATCHDAY SPONSORS

I'd like to thank the WUP Guestbook Collective for sponsoring today's match against Swindon. WUP, or the *Womble Underground Press* to give it its full name, should be familiar to many fans as they produce the club's fanzine and provide one of the most active online forums for discussing all matters about the club. I'd like to thank today's group for sponsoring the match, especially David Gowns for his help with organising this sponsorship. I would also like to welcome them all to our corporate hospitality. We hope you enjoy the day and that Terry and the boys can get you a result today. For more information about WUP, see the box below.

### MATCH SPONSOR



The WUP Guestbook Collective is a bunch of Dons fans, most of them familiar by their tags to those who frequent the WUP guestbook (aka The Old Centrals' Repository), who sponsor a game each season.

The WUP guestbook is a forum where Dons fans spend their own and their employers' time discussing anything and everything at all hours of the day and night, and at other times too. Why not visit the guestbook (at [www.wupgb.co.uk](http://www.wupgb.co.uk)) this evening and share your thoughts about today's performance, or at any other time

and wibble away about whatever you want to. Dons fans from all over the country – and indeed all over the world – gather there. On matchdays the virtual stadium, iPlough Lane, is open at <http://stadium.wimbledonstadium.com>.

### BACK IN FASHION



For everyone who purchased one of our striped New Era fashion scarves, there were two who were disappointed. So we booked additional factory time and are pleased to announce that they are now back in stock. And talking of stock-ins, Christmas products are now on sale as we approach the festive period. The long-awaited car window stickers have also arrived, as have a new range of baby wear. Visit the club shop on matchdays or buy online at [www.afcwimbledon.co.uk/shop/shop.php](http://www.afcwimbledon.co.uk/shop/shop.php)

### BALL SPONSOR



Talbot Productions are the UK's leading corporate production company. Over the past 25 years they have produced more than 600 awards ceremonies, product launches and other events in London and around the world, from Palm Beach to Istanbul, New York to Barcelona. They've also been supporting the Dons since 1990. For more information, see [www.talbotproductions.co.uk](http://www.talbotproductions.co.uk)

### PROGRAMME SPONSOR

**moorad choudhry**



The programme sponsor for the fifth season running is Moorad Choudhry, an MD at the Royal Bank of Scotland and a Professor of Finance at the London Metropolitan University. Moorad was inspired by the original Crazy Gang and is a lifelong supporter of the Dons.





## SCUNTHORPE PRESENTATIONS

(1) Man of the Match Brett Johnson with match sponsor Signal Solutions. (2) Chris Bush with mascot Darcey O'Shea.



## COMMERCIAL BREAK



### WINTER WONDERLAND 2011

This year, Wimbledon's Christmas celebration, Winter Wonderland, is on Thursday 24 November. It features a

parade through the town centre followed by fireworks from the roof of the Centre Court Shopping Centre. This is always a fantastic promotional opportunity for the club as several thousand people from the local community in Wimbledon flock to the event.

This year the club will have a presence on the piazza in front of Morrisons and the Odeon cinema, alongside corporate partners Paul Strank Roofing and Jimmy Spices. The club always has a strong presence in the parade, with the first-team players, Haydon the Womble and many of our Centre of Excellence players taking part.

There will be a wide range of family attractions including live entertainment, fairground rides and food stalls. We are also pleased to announce that there will be a post-Winter Wonderland party at Jimmy Spices – see below for a special offer.

We would like as many fans as possible to come to the event and stop by the piazza to mingle with the players and coaching staff. We will also be looking for volunteers to help hand out leaflets to promote the club's upcoming games. If you can spare a couple of hours on the night, please email [commercial@afcwimbledon.co.uk](mailto:commercial@afcwimbledon.co.uk).



### SPECIAL OFFER FROM JIMMY SPICES

We are really pleased to announce a special offer from corporate partner Jimmy Spices for the post-Winter Wonderland party. Jimmy Spices have given us a limited number of tickets for their full buffet for only £10 each – a discount of £6 on the normal price. Guests of honour will be the first-team squad and coaching staff, and the restaurant have reserved a special area for Dons fans and players. There will also be a very special Dons cake for dessert. To purchase your tickets, visit [www.afcwimbledon.co.uk/shop/tickets](http://www.afcwimbledon.co.uk/shop/tickets).





# KIT SPONSORS 2011/12



**TERRY BROWN**

**HOME KIT**

Tony and Mary

**AWAY KIT**

Vivash Hunt Solicitors

**3RD KIT**

Iain McNay

**HOME SOCKS**

The Whittington Clan

**AWAY SOCKS**

The Skone family



**STUART CASH**

**HOME KIT**

In memory of  
E.M. and D. Kay

**AWAY KIT**

Strezz Factory Ltd

**3RD KIT**

GS Roofing

**HOME SOCKS**

Mike and Elizabeth Berry

**AWAY SOCKS**

Harriet and Matilda



**SIMON BASSEY**

**HOME KIT**

Eileen

**AWAY KIT**

Paul Strank Roofing Ltd

**3RD KIT**

Strezz Factory Ltd

**HOME SOCKS**

Ava and Joshua Bassey

**AWAY SOCKS**

Brian and Carol Hunt



**MARCUS GAYLE**

**HOME KIT**

Janice and  
Graham Williams

**AWAY KIT**

www.wimbledonsw19.com

**3RD KIT**

James Petrie

**HOME SOCKS**

James Edward Farrow

**AWAY SOCKS**

Thomas "Tomtom" Thomson



**ROBIN BEDFORD**

**HOME KIT**

Colin Gales

**AWAY KIT**

Available

**3RD KIT**

Available

**HOME SOCKS**

Joshua and Reuben

**AWAY SOCKS**

Words Fail Me! Podcast



**1. SEB BROWN**

**HOME KIT**

Robert and  
Liam Solis

**AWAY KIT**

Diane Neill Mills

**GLOVES**

William and  
Michael Lonsdale

**SOCKS**

Dean "Gherkins" Perkins  
and Big Mick Onion



**2. RYAN JACKSON**

**HOME KIT**

The Jordan Williams team

**AWAY KIT**

Colin Gales

**3RD KIT**

Available

**HOME SOCKS**

Stephen Cooles

**AWAY SOCKS**

Luke, Amelle  
and Maya



**3. GARETH GWILLIM**

**HOME KIT**

Old Sarum  
and Bob M

**AWAY KIT**

Nick Le Faye

**3RD KIT**

Joshua "Scribbler" Leach

**HOME SOCKS**

Noddy

**AWAY SOCKS**

Elia Louise Farrow



**4. MAX PORTER**

**HOME KIT**

Mark Bunworth

**AWAY KIT**

Pat, Simon  
and Ryan

**3RD KIT**

The Harris family, Kent

**HOME SOCKS**

www.wup.me.uk

**AWAY SOCKS**

Wow! Ness is a wild  
and wonderful wife!



**5. JAMIE STUART**

**HOME KIT**

The Balchins

**AWAY KIT**

Samuel "Tiger" Leach

**3RD KIT**

Bernie, Neville,  
Tony and Phil

**HOME SOCKS**

Paul Merritt

**AWAY SOCKS**

John Lynch



**6. BRETT JOHNSON**

**HOME KIT**

Sharon Matthews

**AWAY KIT**

Barnaby and  
Oscar Athill

**3RD KIT**

Steve and Pam

**HOME SOCKS**

Rob Woodward

**AWAY SOCKS**

Essex Womble



**7. SAM HATTON**

**HOME KIT**

Anuk, Millie and Leela Teasdale

**AWAY KIT**

Hard Back Dons

**3RD KIT**

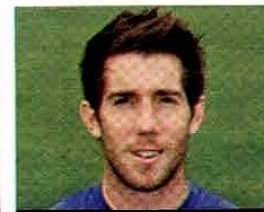
Diana Harris

**HOME SOCKS**

Highland Hobbits

**AWAY SOCKS**

Malteser Dons



**8. RICKY WELLARD**

**HOME KIT**

Smitho and  
Woody

**AWAY KIT**

Handball Club

**3RD KIT**

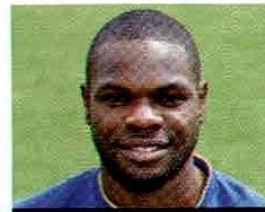
US Dons

**HOME SOCKS**

DownUnderDon

**AWAY SOCKS**

Max Erwood and his Dad



**9. CHARLES ADEMENO**

**HOME KIT**

In memory of  
Bernard Whaley

**AWAY KIT**

PLC

**3RD KIT**

Wimbledon Shaw Smith

**HOME SOCKS**

Ben and Jamie

**AWAY SOCKS**

Charlie, Peter and Millie



**10. JACK MIDSON**

**HOME KIT**

Friends and family  
of Natalie

**AWAY KIT**

The Bedfords

**3RD KIT**

Alex, Max, Joe, Tom and Caitis

**HOME SOCKS**

Trevorwomble

**AWAY SOCKS**

Alex Mitchell







11. LUKE MOORE

**HOME KIT**  
The Linksons

**AWAY KIT**  
Cyrus and Clemency

**3RD KIT**  
Nick and Mike

**HOME SOCKS**  
[www.afcdons.net](http://www.afcdons.net)

**AWAY SOCKS**  
Malteser Dons



12. CHRISTIAN JOLLEY

**HOME KIT**  
Colin Whitehair

**AWAY KIT**  
Simon Cheeseman

**3RD KIT**  
Pat and Jackie

**HOME SOCKS**  
Bailey, Paige  
and Taya

**AWAY SOCKS**  
Rob Cornell



13. CHRIS BUSH

**HOME KIT**  
Martin and  
Daniel Riordan

**AWAY KIT**  
Jon, Harry and  
Devon West

**3RD KIT**  
Steve, Cathy, Emma, Chrissie,  
Paul, Anne and Lizzie

**HOME SOCKS**  
Brewers and Son

**AWAY SOCKS**  
Congratulations to Gavin  
and Alex on their wedding



14. LEE MINSHULL

**HOME KIT**  
Richard and  
Steve Lonsdale

**AWAY KIT**  
David and  
Sharon Charles

**3RD KIT**  
Available

**HOME SOCKS**  
Rob Cornell

**AWAY SOCKS**  
The Pope



15. SAMMY MOORE

**HOME KIT**  
Weird & Wonderful World

**AWAY KIT**  
Alan and  
Connie Parker

**3RD KIT**  
Derek and  
Susan Goodhew

**HOME SOCKS**  
Jim, Jan, Mana and  
Laura Potter

**AWAY SOCKS**  
George Jones



16. FRASER FRANKS

**HOME KIT**  
Jack and  
Kerry Yeomanson

**AWAY KIT**  
Mackey Family  
(Investments) Ltd

**3RD KIT**  
Available

**HOME SOCKS**  
Neil Messenbird

**AWAY SOCKS**  
Jonathan Ling



17. MAT MITCHEL-KING

**HOME KIT**  
Tina Massey

**AWAY KIT**  
Adrian Stacey

**3RD KIT**  
Available

**HOME SOCKS**  
Luke, Rhannon and Lol Watkins

**AWAY SOCKS**  
Mutts



18. BRENDAN KIERNAN

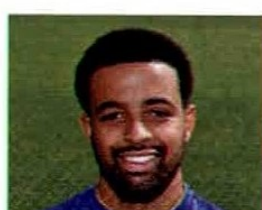
**HOME KIT**  
The Harris family,  
Wimbledon

**AWAY KIT**  
Thai Rack Restaurant,  
Gerrards Cross

**3RD KIT**  
Available

**HOME SOCKS**  
Mikey and Joey Gleeson

**AWAY SOCKS**  
George, Molly  
and Arthur Gleeson



19. KIERAN DJILALI

**HOME KIT**  
Cretan Don

**AWAY KIT**  
Available

**3RD KIT**  
Available

**HOME SOCKS**  
Cretan Don

**AWAY SOCKS**  
Digs, Meaks and Hank Sr



20. JACK TURNER

**HOME KIT**  
Joe and Roxy

**AWAY KIT**  
Available

**GLOVES**  
Nathan, Rebecca,  
Kerri and Aidan  
**SOCKS**  
Jill and the cats



21. REECE JONES

**HOME KIT**  
Millie and Lola Jezzard

**AWAY KIT**  
Matt Jezzard, Mark Murphy  
and Roy Douglas

**3RD KIT**  
Available

**HOME SOCKS**  
Millie and Lola Jezzard

**AWAY SOCKS**  
Ollie and Tom Wilson



23. RASHID YUSSUFF

**HOME KIT**  
Linda and Roger Dennis

**AWAY KIT**  
The SweDons - Pelle, Markus,  
Paul and Henrik

**3RD KIT**  
Dennis Beckett

**HOME SOCKS**  
Tony, Rachael and Luke

**AWAY SOCKS**  
Malteser Dons



26. JAMES MULLEY

**HOME KIT**  
911 Womble

**AWAY KIT**  
Julian, Pete and Andy -  
The Gumbo Crew

**3RD KIT**  
Available

**HOME SOCKS**  
Mike and Elizabeth Berry

**AWAY SOCKS**  
Jonny Wah Wah from On Trial



HAYDON THE WOMBLE

**HOME KIT**  
Paul Strank Roofing Ltd

**AWAY KIT**  
Peter and Michael Cork

**HOME SOCKS**  
Kelly, Charlotte and Emily

**AWAY SOCKS**  
Libby and  
Georgie Messenbird



**TO BECOME A  
KIT SPONSOR**

**CALL  
KEITH MCGUINNESS  
ON 020 8547 3336**

**OR EMAIL  
COMMERCIAL@  
AFCWIMBLEDON.CO.UK**



**Haydon** will be overseeing the fun  
and party favourite **RockinPaddy** will be  
dj-ing and organising the party games.

**Terry Brown and his players** will be joining in the fun  
and Father Christmas has even agreed to leave  
the North Pole for a couple of hours to hand out presents.

# JUNIOR DONS **CHRISTMAS PARTY** Sunday 11 December - 11.00am to 2.00pm

**Back Bar, Cherry Red Records' Stadium - Kingsmeadow**

**Admission is FREE to Junior Dons and junior season ticket holders,  
£10 for others, on a first come first served basis.**

Spaces are limited so we recommend that you apply before 30 November.

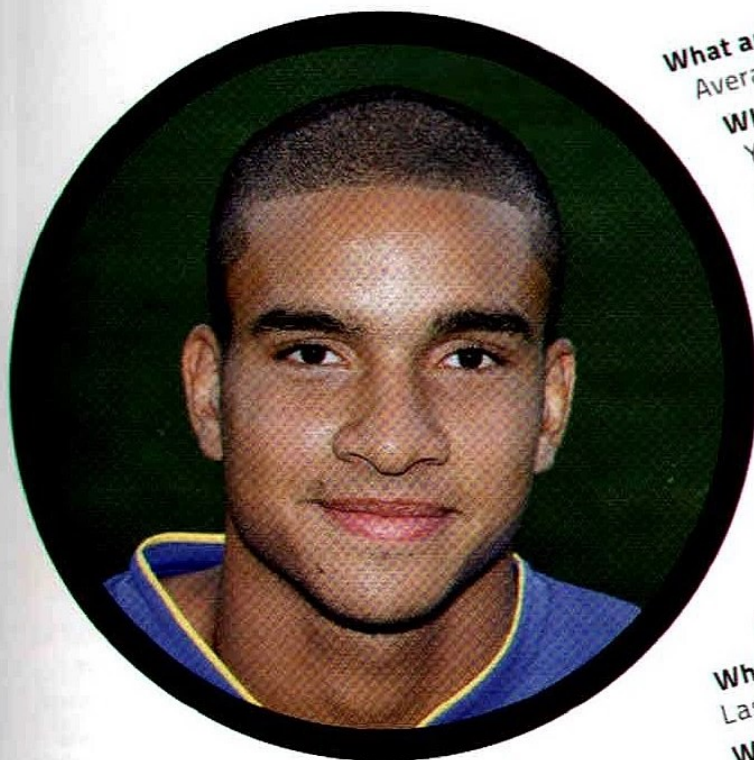
Please send Junior Don's name, age, gender, membership number and  
details of any allergies or medical conditions to the club's office  
for the attention of Aideen Rochford.

If you have any queries, or would like to join the Junior Dons  
in time to attend the party, please contact **[info@afcwimbledon.co.uk](mailto:info@afcwimbledon.co.uk)**



# CHRIS BUSH

ON THE SPOT



**Who do you room with on away trips?**  
Charles Ademeno

**What's been your worst moment in a match?**  
Scoring an own goal against Crawley

**What's your typical pre-match meal?**  
Chicken and pasta

**Of the goals you've scored for Wimbledon, what's your favourite?**  
My goal in the shoot-out against Stevenage in the Johnstone's Paint Trophy

**What's going through your head 30 seconds before kick-off?**  
Three points!

**Who's the best-dressed player in the squad?**  
Me, of course!

**What music motivates you?**  
R&B

**Dream FA Cup draw?**  
Spurs away in the Third Round, and we win 1-0

**If you could play abroad, where would it be?**  
America

**What do you do on your day off?**  
Sleep, catch up with friends and family

**What are you like at karaoke?**  
Average at best

**What was your favourite toy when you were ten?**  
Yo-yo

**Here's £1000 – what would you buy?**  
Save for a car

**What's your favourite gadget?**  
iPhone

**What makes you happy?**  
Friends and family

**What film part do you see yourself in?**  
Will Smith in Hitch

**Can you cook? What's your signature dish?**  
Stir-fry

**Where did you go on your last holiday?**  
Portugal

**What was the last book you read?**  
Last week's matchday programme

**What's the funniest show on TV?**  
Celebrity Juice

**Hit the dancefloor or stay by the bar?**  
Dancefloor

**Evenly split the bill or work out yours only?**  
Pay it all if it's a date!

**What's your dream car?**  
Bentley GT

**Hot & spicy or cool & creamy?**  
Hot and spicy

**All Saints or Zara?**  
All Saints – not that it fits

**Buy online or go to the shops?**  
Go to the shops

**Xbox or PS3?**  
Neither

ON  
THE  
SPOT





**TUESDAY 22 NOVEMBER 2011**  
**7.45 PM KICK-OFF**

# SCUNTHORPE UNITED

**GLANFORD PARK, JACK BROWNSWORD WAY, SCUNTHORPE, NORTH LINCOLNSHIRE, DN15 8TD**  
**STADIUM CAPACITY 9,088 (NOT ALL SEATED) • RECORD ATTENDANCE 8,921 V NEWCASTLE UNITED (CHAMPIONSHIP, 2009)**



Glanford Park, on the edge of the town, is a rather box-like stadium. The home end is terracing, with seated stands on the other three sides. Visiting fans are allocated the AMS (South) Stand, where two supporting pillars interrupt the view a little. Hot snacks are available in the ground; there are eating outlets such as KFC and McDonalds in the retail park across the road. The Old Farmhouse pub at the ground entrance welcomes all fans, but no colours are allowed. The Berkeley, by the first roundabout on the main road towards Scunthorpe, is a favourite haunt of away supporters. Recommended are the Ironstone Wharf, about a mile away on the A18, and the Honest Lawyer on Oswald Road, not far from the station.

**www.scunthorpe-united.co.uk**  
**admin@scunthorpe-united.co.uk 0871 221 1899**

## THE IRON'S HOME FORM

29 Oct	Tranmere Rovers	4-2
25 Oct	Huddersfield Town	2-2
8 Oct	Leyton Orient	2-3
4 Oct	Oldham Athletic (JPT)	0-1
24 Sep	Yeovil Town	2-1
10 Sep	Sheffield United	1-1

## TICKET INFO

Dons fans will be accommodated in the all-seater AMS (South) Stand and should enter by gates 6 A, B, and C or 7 A and B.

AFC Wimbledon will not be selling tickets in advance, and tickets will be available at the turnstiles on the day of the match.

### Prices

Adults £15; Concessions £9; Under-16s £2.

Matchday programme: £3.00.

## SHOW YOUR COLOURS



The Dons will be in their usual yellow away strip.

**By road** The ground is on the outskirts of Scunthorpe and very easy to find. Leave the M180 at Junction 3 and take the M181 for Scunthorpe. At the end of the M181 you will see the ground on your right. Turn right at the first roundabout onto the A18 and right again into the stadium car park.

**Parking** The car park at the ground has space for 600 cars and costs £3. There is some street parking in the surrounding area.

**By rail** Scunthorpe is reached by taking a train from London King's Cross and changing at Doncaster. The journey time is about 2 hours. A return journey the same evening is not possible. For more information, use National Rail Enquiries ([www.nationalrail.co.uk](http://www.nationalrail.co.uk), 08457 484950).

The station is over two miles from the stadium, so the easiest way to get there from the station is by taxi. Alternatively, turn left out of the station and head towards the crossroads (facing a church) and then right into Oswald Road. Past a set of traffic lights you will find the Honest Lawyer and Blue Bell pubs. At the next traffic lights turn left into Doncaster Road, where there are a number of fast food outlets. Continue straight down this road and you will eventually reach Glanford Park on your left. Otherwise, as you pass the Blue Bell pub on your left, turn left

into Doncaster Road from where you can catch a No.909 bus to the ground.

**By coach** The supporters' coach will be picking up from The Grove at 12.30 pm and from The Cherry Red Records Stadium at 1.00 pm. The price is £15, and places on the coach may be reserved at the complimentary tickets window before or after today's game. Alternatively, bookings may be made by contacting the club office on 020 8547 3528 during normal office hours or at the online ticket shop, accessed via the front page of the official website.

Some of this information is based with permission on Duncan Adams' Football Ground Guide. For more details see [www.footballgroundguide.com/scunthorpe\\_united/](http://www.footballgroundguide.com/scunthorpe_united/)





npower LEAGUE 2

SATURDAY 26 NOVEMBER 2011  
3.00 PM KICK-OFF

## BURTON ALBION

THE PIRELLI STADIUM, PRINCESS WAY, BURTON-ON-TRENT, DE13 0AR  
CAPACITY 6,912 (2,034 SEATED) • RECORD ATTENDANCE 6,192 V OXFORD UNITED (2009)

The stadium was completed in 2005 and is near the Pirelli factory. The all-seater Main Stand runs along one side; on the other side and at both ends are steeply banked covered terraces. The range of food available includes faggots and mushy peas, and there is a bar for away fans. Burton boasts many excellent pubs. The Beech Inn is on Derby Road in the opposite direction from the town centre, and the Great Northern is on Wetmore Road, off the roundabout near the stadium entrance. Near the railway station are the Roebuck, the Devonshire Arms, and the 19th-century Cooper's Tavern in Milton Street.

www.burtonalbionfc.co.uk

bafc@burtonalbionfc.co.uk 01283 565938

## BREWERS' HOME FORM

22 Oct	Bristol Rovers	2-1
14 Oct	Cheltenham Town	0-2
1 Oct	Bradford City	2-2
17 Sep	Swindon Town	2-0
13 Sep	Crewe Alexandra	1-0
3 Sep	Plymouth Argyle	2-1

## TICKET INFO

We have been allocated 380 seats and 1,400 terrace places. Fans wanting seats are advised to buy their tickets in advance from Burton Albion. Terrace tickets (and seats, subject to availability) will be on sale on the day.

**Seats** The seats are in the South Stand, accessed via Turnstiles A, B and C. Prices are:

Adults £16; Over-65s and Students (17-22) £14;  
Under-16s £6

**Terrace** The away terrace is in the Coors East Stand, accessed via Turnstiles T, U, V and W. Prices are:

Adults £14; Over-65s and Students (17-22) £12;  
Under-16s £4

Matchday programme: £3.00.

## SHOW YOUR COLOURS



The Dons will be in their blue strip.

**By road** Leave the M1 at Junction 22 and join the A511 (signposted Ashby and Coalville). Beware: there are many speed cameras along this road. Stay on the A511, crossing the Trent Bridge and continue to the set of lights underneath the Brewery flyover, turning right there into Hawkins Lane. Go straight across at the roundabout just after the railway bridge into Princess Way. The entrance to the ground is 300 yards on the right. An alternative route is via the toll section of the M6. Take the M40 from London, and where the M40 meets the M42 join the M42 northbound (for Birmingham Airport and NEC). At Junction 9 join the M6. Leave the M6 at Junction T4 and follow signs for the A38 to Burton. On approaching Burton, go past the Branston interchange and leave the A38 at the next interchange, Clay Mills (there is a 180-degree left turn at the exit), and follow signs for Burton A5121. Go straight across at the first roundabout, after half a mile, and turn right at the next roundabout into Princess Way. The entrance to the ground is 300 yards on the right.

**Parking** There is no parking at the ground for visiting fans, parking is available at the nearby Rykneld Industrial Estate on Derby Road at a cost of £2. There is also some street parking in the area.

**By rail** Burton-upon-Trent is reached by taking a train from London St Pancras and changing at Derby. The overall journey time is about 2 hours 10 minutes. For more information, use National Rail

Enquiries (www.nationalrail.co.uk, 08457 484950).

The train station is about 25 minutes' walk from the ground. On leaving the station, turn left down the hill and then right into Derby Street (A5121). Keep going for about 1½ miles, straight across the first roundabout by the Derby Turn, then left at the next roundabout into Princess Way.

A taxi from the station to the ground should cost around £5. The Trent Barton V1 and V2 bus service runs every half-hour from directly outside the station to the stadium.

**By coach** The supporters' coach will be picking up from The Grove at 8.30 am and from The Cherry Red Records Stadium at 9.00 am. The price is £15, and places on the coach may be reserved at the complimentary tickets window before or after today's game. Alternatively, bookings may be made by contacting the club office on 020 8547 3528 during normal office hours or at the online ticket shop, accessed via the front page of the official website.

**Disabled fans'** Disabled supporters in receipt of the medium or higher disability allowance are entitled to have a carer accompany them free of charge, and should book their own tickets in advance by contacting Burton Albion on the number above.

Some of this information is based with permission on Duncan Adams' Football Ground Guide. For more details see [www.footballgroundguide.com/burton\\_albion/](http://www.footballgroundguide.com/burton_albion/)





# **A Winning Team**

## **AFC Wimbledon & Radio Jackie**



**[www.radiojackie.com](http://www.radiojackie.com)**

Design and photography by [www.pictureperfectionist.co.uk](http://www.pictureperfectionist.co.uk)



npower LEAGUE 2

SATURDAY 17 DECEMBER 2011  
3.00 PM KICK-OFF

## ROTHERHAM UNITED

DON VALLEY STADIUM, WORKSOP ROAD, SHEFFIELD, S9 3TL

CLUB: ROTHERHAM UNITED FC, MANGHAM HOUSE, MANGHAM ROAD,  
BARBOT HALL INDUSTRIAL ESTATE, ROTHERHAM, S61 4RJ

CAPACITY 25,000 (ALL SEATED) • RECORD ATTENDANCE 7,082 V ALDERSHOT TOWN (L2 PLAYOFF SF, 2005)



After 101 years at their Millmoor home, Rotherham have moved to Sheffield's Don Valley athletics stadium while their new ground is being constructed; it should be ready for the start of 2012/13. Don Valley's large covered 10,000-capacity main stand is used for Rotherham's games and accommodates home and away fans in separate blocks. Away fans normally enter and exit the stadium by different routes. There is a basic bar under the main stand, which also sells food, that away fans can use. Pubs in the surrounding area are pretty average. Faras, near the stadium entrance, welcomes away fans. There are some good pubs in the city centre, and the Sheffield Tap, at Sheffield train station, is strongly recommended.

www.themillers.co.uk

office@rotherhamunited.net 0844 414 0733

## MILLERS' HOME FORM

5 Nov	Aldershot Town	2-0
22 Oct	Shrewsbury Town	1-1
8 Oct	Burton Albion	0-1
4 Oct	Sheffield United (JPT)	1-2
24 Sep	Southend United	0-4
10 Sep	Dagenham & Redbridge	3-1

## TICKET INFO

This game is not all ticket.

Adults £18; Concessions\* £10; Juveniles (12-16) £6; Juniors (8-11); £5; Under-8s free.

\*Students (with a valid NUS Card -non-NUS card-holders will need a letter on headed paper signed by a representative of the college/university stating that the holder is on a full-time course). Disabled fans (higher-and middle-rate DLA) and Over-60s.

Matchday programme: £3.00.

## SHOW YOUR COLOURS



The Dons will be in their usual yellow away strip.

**By road** Leave the M1 at Junction 34 and take the A6178 towards Sheffield City Centre.

Continue on the A6178 (Attercliffe Road) and you will come to the stadium on your left.

After passing the stadium, turn left at the next set of lights into Worksop Road, and then left again for the stadium entrance.

Junction 34 is also the turn-off for the Meadowhall Shopping Centre, so allow a little extra time as the traffic can be quite heavy coming off the motorway.

**Parking** Matchday car parking is available at Pic Toys, on Worksop Road, at £3 per car; the car park is signposted. Otherwise there is plenty of street parking on the right side of Attercliffe Road, opposite the stadium.

**By rail** Sheffield is served by half-hourly trains from London St Pancras. The journey time is 2 to 2½ hours. For more information, use National Rail Enquiries (www.nationalrail.co.uk, 08457 484950).

The most convenient way to get from the train station to the stadium is to take the tram to the Arena Don Valley Stadium stop. The journey, with one change, takes about 15 minutes and for adults costs £3 return. Alternatively, the 69 bus from the

train station stops only a couple of minutes' walk from the stadium; the journey time is 7-8 minutes. Many other buses run along Attercliffe Road by the stadium, including numbers 2, 8, 9, 59, 130 and 287.

**By coach** The supporters' coach will be picking up from The Grove at 8.30 am and from The Cherry Red Records Stadium at 9.00 am. The price is £15, and places on the coach may be reserved at the complimentary tickets window before or after today's game. Alternatively, bookings may be made by contacting the club office on 020 8547 3528 during normal office hours or at the online ticket shop, accessed via the front page of the official website.

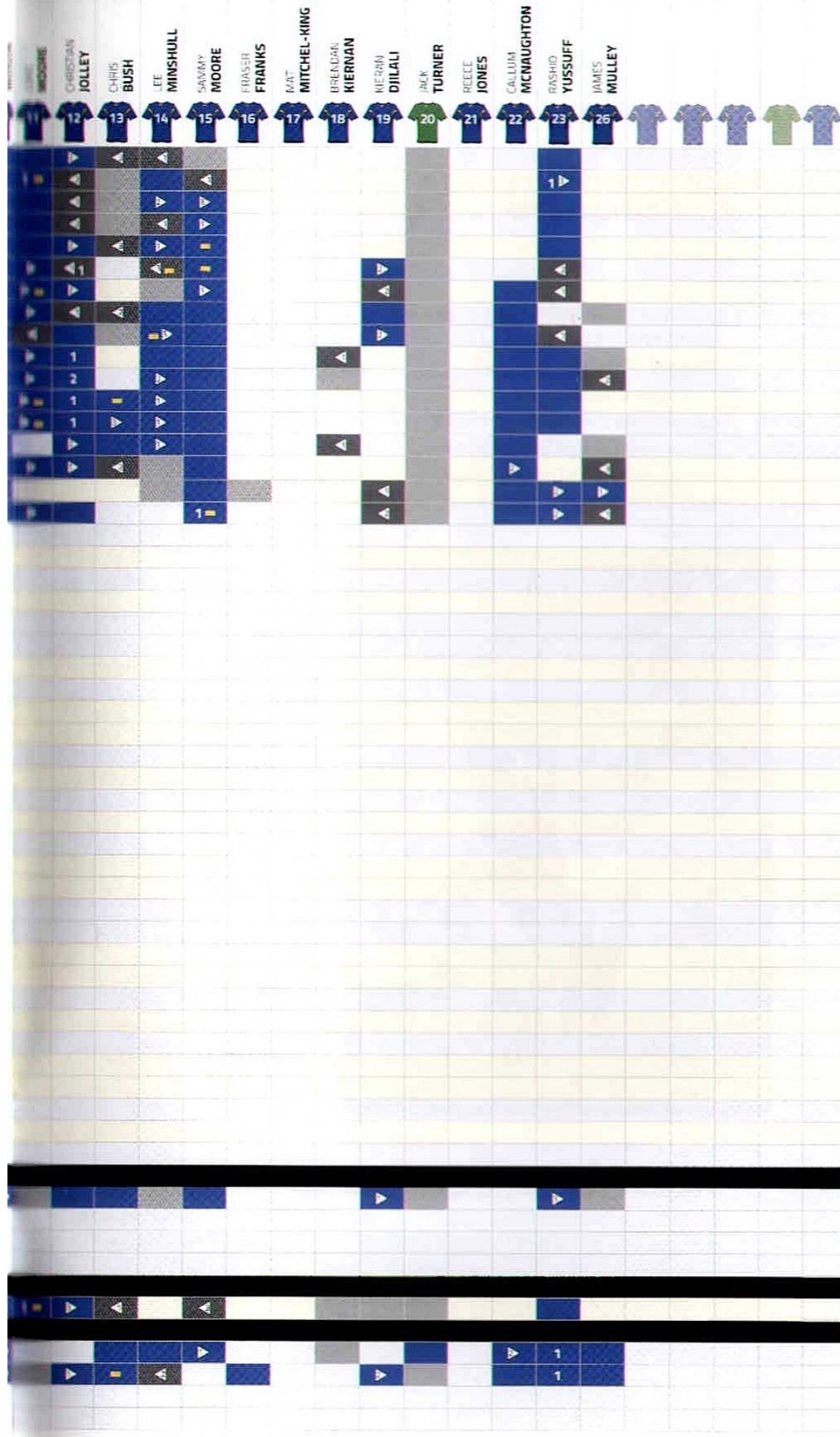
Some of this information is based with permission on Duncan Adams' Football Ground Guide. For more details see [www.footballgroundguide.com/rotherham\\_united/](http://www.footballgroundguide.com/rotherham_united/)





	DATE	KO	H/A	OPPOSITION	RESULT	ATT	AWAY	PTS	POS	SLB BROWN	RYAN JACKSON	GARETH GWILLIM	MAX PORTER	JAMIE STUART	BRETT JOHNSON	SAVI HATTON	RICKY WELLS	CHARLES ADEMENO	WILLIAMSON
AUG	SAT 6 AUG	12:45	H	BRISTOL ROVERS	2-3	4629	750	0	17					1					
	SAT 13 AUG	15:00	A	DAGENHAM & REDBRIDGE	2-0	2904	958	3	10										
	TUE 16 AUG	19:45	A	PLYMOUTH ARGYLE	2-0	5900	423	6	5										
	SAT 20 AUG	15:00	H	HEREFORD UNITED	1-1	4239	329	7	7										
SEP	SAT 27 AUG	15:00	A	MACCLESFIELD TOWN	0-4	1881	400	7	13										
	SAT 3 SEP	15:00	H	PORT VALE	3-2	4404	446	10	7			1							
	SAT 10 SEP	15:00	A	ALDERSHOT TOWN	1-1	4110	1203	11	9				1						
	TUE 13 SEP	19:45	H	NORTHAMPTON TOWN	0-3	4271	563	11	15										
OCT	SAT 17 SEP	15:00	H	CHELTENHAM TOWN	4-1	3860	291	14	12										
	SAT 24 SEP	15:00	A	BRADFORD CITY	2-1	10255	515	17	7										
	SAT 1 OCT	15:00	H	GILLINGHAM	3-1	4606	776	20	4										
	SAT 8 OCT	15:00	A	MORECAMBE	2-1	2631	431	23	3										
NOV	SAT 15 OCT	15:00	H	CREWE ALEXANDRA	1-3	4604	440	23	6										
	SAT 22 OCT	15:00	H	CRAWLEY TOWN	2-5	4549	698	23	8										
	TUE 25 OCT	19:45	A	TORQUAY UNITED	0-4	2353	385	23	12										
	SAT 29 OCT	15:00	A	SHREWSBURY TOWN	0-0	5861	526	24	12										
DEC	SAT 5 NOV	15:00	H	BARNET	1-1	4369	698	25	11										
	SAT 19 NOV	15:00	H	SWINDON TOWN															
	SAT 26 NOV	15:00	A	BURTON ALBION															
	SAT 10 DEC	15:00	H	ACCINGTON STANLEY															
JAN	SAT 17 DEC	15:00	A	ROTHERHAM UNITED															
	MON 26 DEC	12:15	H	OXFORD UNITED															
	SAT 31 DEC	15:00	H	SOUTHEND UNITED															
	MON 2 JAN	15:00	A	SWINDON TOWN															
FEB	SAT 7 JAN	15:00	H	MACCLESFIELD TOWN															
	SAT 14 JAN	15:00	A	PORT VALE															
	SAT 21 JAN	15:00	A	GILLINGHAM															
	SAT 28 JAN	15:00	H	ALDERSHOT TOWN															
MAR	SAT 4 FEB	15:00	A	CHELTENHAM TOWN															
	SAT 11 FEB	15:00	H	BRADFORD CITY															
	TUE 14 FEB	19:45	A	NORTHAMPTON TOWN															
	SAT 18 FEB	15:00	H	MORECAMBE															
MAY / APR	SAT 25 FEB	15:00	A	CREWE ALEXANDRA															
	SAT 3 MAR	15:00	A	HEREFORD UNITED															
	TUE 6 MAR	19:45	H	PLYMOUTH ARGYLE															
	SAT 10 MAR	15:00	H	DAGENHAM & REDBRIDGE															
FA CUP	SAT 17 MAR	15:00	A	BRISTOL ROVERS															
	TUE 20 MAR	19:45	A	OXFORD UNITED															
	SAT 24 MAR	15:00	H	BURTON ALBION															
	SAT 31 MAR	15:00	A	ACCINGTON STANLEY															
CARLING CUP	FRI 6 APR	15:00	H	ROTHERHAM UNITED															
	MON 9 APR	15:00	A	SOUTHEND UNITED															
	SAT 14 APR	15:00	A	CRAWLEY TOWN															
	SAT 21 APR	15:00	H	TORQUAY UNITED															
JOHNSTONE'S PAINT TROPHY	SAT 28 APR	15:00	A	BARNET															
	SAT 5 MAY	15:00	H	SHREWSBURY TOWN															
	R1 SAT 12 NOV	15:00	H	SCUNTHORPE UNITED	0-0	2,933	435												
	R1R TUE 22 NOV	19:45	A	SCUNTHORPE UNITED															
PR	FRI 29 JULY	19:45	A	CRAWLEY TOWN	2-3	3,205	1,024												
	R2 TUE 4 OCT	19:45	H	STEVENAGE	2-2 WPens	1,416	136												
	QTF TUE 8 NOV	19:30	A	SWINDON TOWN	1-1 LPens	4,329	281												





# KEY

- STARTING XI
- USED SUB
- UNUSED SUB
- BOOKING
- SENT OFF
- GOALS SCORED
- SUB OFF
- SUB ON

## POLICY ON BANNING FANS

Fans may be banned for offences which include violent, threatening or disruptive behaviour; racist or homophobic language or obscene chanting and obstructing steward in the performance of their duty.

If a fan is banned, that ban is indefinite until the fan demonstrated that their behaviour has improved sufficiently for readmission to be agreed. In the meantime, the club will encourage other clubs to enforce the ban at away games.

Banned fans can appeal this exclusion order to the AFC Wimbledon Chief Executive. They also have the right to appear before a selected Disciplinary and Complaints Panel to make representations to be readmitted.



# IT ONLY TOOK NINE YEARS

THE NEWS THAT JOHN FASHANU HAD REMARRIED EARLIER THIS YEAR REMINDED **STEPHEN CRABTREE** THAT THE BIG MAN'S LAST APPEARANCE IN A DONS SHIRT WAS AGAINST TODAY'S OPPONENTS, OVER 17 YEARS AGO.

**H**E IS THE SORT OF PERSON FOR whom one life was never going to be enough. Barnardo's boy, footballer, businessman, agent, international ambassador, television personality, professional celebrity, friend to pop stars, confidant of presidents... acquitted of match-fixing, accused again of match-fixing. These are just a few of the chapter headings in the life story of one of the Dons' most intriguing old boys.

It was during Wimbledon's last league visit to Swindon in 1994 that we saw the end of John Fashanu the player. His brilliant 40-yard chip-cum-lob, which fooled keeper Nicky Hammond, proved to be the big striker's 130th and final goal for the club. For over seven seasons he had epitomised the Wimbledon team of that era – brash, self-confident and carrying more than a hint of menace. Like so many of his team-mates, he had been shunned by the bigger clubs as a youngster and had a point to prove.

Fashanu and his brother Justin were the sons of a Nigerian barrister who split from their mother when John was four. They were sent to a children's home in London, then fostered out to Alf and Betty Jackson and brought up in rural Norfolk. After this unconventional childhood, it was inevitable that the brothers would struggle with their sense

of identity. For Justin, the struggle would end in suicide. John, the tougher of the two, survived.

And as a footballer he not only survived but thrived. After making his name in George Graham's no-nonsense Second Division Millwall side, he transferred to Wimbledon in

of his somewhat limited ability. Despite being placed 22nd in a 2007 *Times* newspaper poll of the 50 worst Premier League footballers ever, he was good enough to be part of the Dons side that won the FA Cup in 1988 and to be capped twice by England the following year.

But controversy was never far away.

He shattered the cheekbone of Tottenham's Gary Mabbutt with his elbow during an aerial challenge at White Hart Lane in 1993, and he later had to fight off allegations of match fixing in the courts. He won, but was ordered to pay substantial costs. By the time he left South London for Villa Park his playing days were numbered, but his craving to be the centre of attention had not dimmed. While he has kept himself in the public eye in the years since, you sense that he has rarely found peace.

In April this year newspapers reported that the now 48-year-old was to

wed again – this time to a Nigerian barrister. "Getting married to Abigail is the best thing to happen to me," he was quoted as saying. "Life has never been this sweet. It has been wonderful." For a man who appears to have spent much of his adulthood running away from the rejections of his youth, one hopes that his obvious joy will last.



John Fashanu celebrates another Selhurst Park goal

the spring of 1986 as the Dons were poised to enter the top flight. His arrival was a statement that the club meant business. He scored four goals in eight games as Dave Bassett's side completed their unlikely journey to the top of the English game.

Brilliant in the air and totally fearless on the ground, John's bravura often terrified opponents and allowed him to make the most





# ENERGY PRICES

## Fix your energy prices for two winters

here's how... Switch to npower's Winter Fix tariff and benefit from fixed energy prices until 31st March 2013. If you take both gas and electricity you'll get a £40 helping hand, as well as a further £100 off your bill if you pay by Direct Debit for a year. Available to new and existing customers.

Call **0800 975 8636**  
quoting N637P or visit [npower.com/fix](http://npower.com/fix)

Switch now  
for up to  
**£40**  
off your bill

**npower**

© Aardman Animations 2011. Requires a residential contract with npower for electricity and/or gas on our Winter Fix tariff. **Not available to customers with pre-payment or non standard metering.** Prices fixed at npower's new standard (off-line) prices (effective 01/10/11) until 31/03/13 when they will revert to prevailing standard (off-line) prices. Prices will be fixed providing no costs are imposed by any governmental, statutory or licensing authority which cause our prices to exceed the fixed level. An early exit fee of £20 per fuel may apply if you change your tariff or supplier before 31/03/13. Offer is subject to availability and may be withdrawn, suspended or amended at any time - full terms and conditions available at [npower.com](http://npower.com). **Up to £40 bonus:** If you take both fuels on our Winter Fix tariff we'll give you a one off £40 discount off your bill or £20 if you only take one fuel. Your discount will be credited to your account (£20 to your electricity account and £20 to your gas account if you take both fuels) on your first bill after you switch to Winter Fix. **Your annual discount:** If you pay by Direct Debit continuously for 12 months we'll give you a discount off your bill (£100 if you buy both electricity and gas, £50 if you buy just gas or £40 if you buy just electricity). Your discount will be credited to your account on or before the last day of the 12th month after becoming eligible and then on or before the same last day of each year you continue to pay this way. Calls may be monitored and recorded for training and security purposes.



# THE GREATEST JOB ON EARTH

A man in a dark suit, white shirt, and red tie is shown from the chest up. He is holding a large silver trophy in his left hand and a soccer ball in his right hand. The background is a blurred image of a soccer stadium filled with spectators and confetti.

## FOOTBALL MANAGER™ 2012

## OUT NOW ON PC / MAC



ask  
about  
games  
com



SEGA®  
www.sega.co.uk

© Sports Interactive Limited 2011. Published by SEGA Publishing Europe Limited. Developed by Sports Interactive Limited. SEGA and SEGA logo are either registered trademarks or trademarks of SEGA Corporation. Football Manager, Sports Interactive and the Sports Interactive Logos are either registered trademarks or trademarks of Sports Interactive Limited. All other company names, brand names and logos are property of their respective owners. The Swoosh Design is a registered trademark of Nike, Inc. and Nike International Ltd. in various countries throughout the world. Apple, the Apple logo, iPhone, iPod touch, and iTunes are trademarks of Apple Inc., registered in the U.S. and other countries. iPad is a trademark of Apple Inc.